

# The wolf and the city: insights on wolves conservation in the anthropocene

M. Zanni , R. Brogi , E. Merli & M. Apollonio

Department of Veterinary Medicine, University of Sassari, Sassari, Italy

## Keywords

*Canis lupus*; large carnivores; human-wildlife conflict; wildlife management; urban wildlife syndrome; recolonization; human-dominated landscapes.

## Correspondence

Rudy Brogi, Department of Veterinary Medicine, University of Sassari, via Vienna 2, I-07100, Sassari, Italy.  
Email: rbrogi@uniss.it

Editor: Vincenzo Penteriani

Received 15 June 2022; accepted 20 January 2023

doi:10.1111/acv.12858

## Abstract

After a long period of human persecution that led it to extinction in most of its distribution range, the wolf is undergoing a fast recovery. Despite being described as an elusive species only living in remote areas, wolves are recently occupying also human-dominated landscapes, increasing the frequency of direct contacts with humans. Nevertheless, it is unclear whether this situation is only caused by a numerical increase or partially facilitated by a higher tolerance of wolves with respect to human proximity. We focused on a European region offering an abundant, widespread and long-term monitored wolf population to analyse wolf pack distribution and its relationship with human presence across areas recolonized across four different time periods (1972, 1996, 2005 and 2016). Throughout areas recolonized during different periods, wolves were initially located in mountains and hills, occupying plains only in the recent past. Although they consistently tended to be located as far as possible from urban settlements, especially from those with over 5000 inhabitants, in 2016, 70% of packs included at least one urban settlement within the expected home range. Moreover, the distance kept by wolves from the nearest urban settlement was more constrained in areas of recent recolonization (2005 and 2016) and in the mountainous altitudinal range, likely due to a reduced availability of territories. We showed that wolves tend to keep as far away as possible from humans, but they can also permanently occupy human-dominated landscapes to cope with the lower availability of space induced by their remarkably successful recolonization. Our results shed light on an upcoming scenario for the conservation of large carnivores.

## Introduction

Wolves *Canis lupus* experienced historically one of the strongest persecutions ever recorded on a large carnivore by mankind. They were completely wiped out from a large portion of their original distribution by a steady and intense hunting, trapping and poisoning, in Western Europe and in North America (Boitani, 2000; Ripple *et al.*, 2014). Differently from other carnivores, direct persecution was the actual cause of wolves' decline and extinction in several areas, rather than environmental modifications or strong reduction in prey availability (Breitenmoser, 1998; Boitani, 2000). Indeed, differently from large cats or bears, wolves could rely on their well-known ecological plasticity to survive in many different environmental contexts, even in those strongly modified by humans (Blanco & Cortés, 2007; Eggermann *et al.*, 2011; Llaneza, López-Bao, & Sazatornil, 2012; Ahmadi, López-Bao, & Kaboli, 2014; Kuijper *et al.*, 2016). Thus, their extinction was, in most cases, the outcome of a deliberate and constant effort aimed at removing a

cause of strong nuisance for livestock breeding and sometimes a danger for humans themselves (Cayuela, 2004; Treves *et al.*, 2004; Kusak, Skrbinšek, & Huber, 2005; Bisi *et al.*, 2007). Even nowadays, human-induced mortality is the main source of mortality for wolves in large portions of their range, mainly in Western countries with variable human population density (Álvares, Pereira, & Petrucci-Fonseca, 2000; Carreira & Petrucci-Fonseca, 2000; Lovari *et al.*, 2007; Treves *et al.*, 2017; Musto *et al.*, 2021). As reported for other large carnivores (Klees van Bommel *et al.*, 2020), the proximity to urban settlements may be dangerous for wolves, which may reduce movements (Ferreiro-Arias and Llaneza, submitted) or approach human settlements only at night (Kojola *et al.*, 2016) to avoid contacts with humans. This is consistent with the history of the species in Western Europe and North America where wolves were eradicated from all environments with the exception of forested remote areas characterized by limited human presence and scarcity of urban settlements, eventually represented by scattered farms or tiny villages (Promberger &

Hofer, 1994; Boitani & Ciucci, 1995) making the wolf a typical representative of ecological refugees (Kerley, Kowalczyk, & Crowsigt, 2012). This phenomenon biased the perception of wolf habitat preferences, convincing researchers that wolf was a typical forest-dwelling species with a strong aversion for all human-related infrastructures, like roads and cities, and human-modified environments such as agricultural landscapes (Ciucci *et al.*, 1997; Theuerkauf, Rouys, & Jedrzejewski, 2003; Cayuela, 2004; Włodzimierz Jedrzejewski *et al.*, 2005; Oakleaf *et al.*, 2006; Lesmerises, Dussault, & St-Laurent, 2012).

However, the recent history of this species in Western Europe is characterized by a strong change in the aforementioned patterns, as wolves are impressively increasing (Chapron *et al.*, 2014; Mech, 2017). The decrease in direct persecution by man, which was partially linked to the decline of free-ranging livestock breeding as a major cause of conflict with humans, played a relevant role in allowing population recovery (Treves *et al.*, 2004; Bisi *et al.*, 2007; Ripple *et al.*, 2014), together with array of national and European laws protecting large carnivores (Boitani, 2000). Moreover, rewilded areas increased due to the abandonment of mountain and hilly areas by people that moved to urban areas (Navarro & Pereira, 2015) mainly after Second World War. This allowed natural vegetation to increase (Navarro & Pereira, 2015) resulting in a cascade effect on the abundance of wild ungulates (Apollonio, Andersen, & Putman, 2010), which in turn led their predators to recover their former abundance and distribution (Bruskotter & Shelby, 2010; Chapron *et al.*, 2014; Gippoliti *et al.*, 2018).

Many studies modelled and predicted favourable habitats for wolves (Whittington, St. Clair, & Mercer, 2005; Lesmerises, Dussault, & St-Laurent, 2012; Ahmadi, López-Bao, & Kaboli, 2014; Bassi *et al.*, 2015; Benson, Mahoney, & Patterson, 2015; Benson, Mills, & Patterson, 2015; Muhly *et al.*, 2019; Carricondo-Sanchez *et al.*, 2020). Nonetheless, most studies considered only sparsely populated areas, just because these areas were the first to be recolonized by wolves (Massolo & Meriggi, 1998; Theuerkauf *et al.*, 2003; Jedrzejewski *et al.*, 2008; Eggermann *et al.*, 2011; Llaneza, López-Bao, & Sazatornil, 2012; Ahmadi, López-Bao, & Kaboli, 2014; Carricondo-Sanchez *et al.*, 2020; Fernández-Gil *et al.*, 2020). As an outcome, the resulting models emphasized natural factors, as the forest cover, as the most important predictor of wolf presence or future settlement. On the contrary, Avgar, Betini, & Fryxell (2020) showed that habitat selection is highly context-dependent on availability of prey and consumer density, suggesting that non-human factors can act as main drivers of wolf presence.

However, several studies showed that wolves can survive in human-dominated landscapes (Theuerkauf *et al.*, 2003; Chavez & Gese, 2006; Blanco & Cortés, 2007; Eggermann *et al.*, 2011; Llaneza, López-Bao, & Sazatornil, 2012; Ahmadi, López-Bao, & Kaboli, 2014; Kuijper *et al.*, 2016) or even take advantage of them (Kittle *et al.*, 2017; Muhly *et al.*, 2019), more likely thanks to a high ecological and behavioural plasticity and to the ability to cope with mortality risks due to human proximity (Newton *et al.*, 2017). On

the contrary, it was observed that wolves tend to avoid humans and their activities (Ordiz *et al.*, 2011; Benson, Mills, & Patterson, 2015; Kaartinen, Antikainen, & Kojola, 2015; Sazatornil *et al.*, 2016; Filla *et al.*, 2017), showing a positive selection only when a substantial payoff is available (Newsome *et al.*, 2015; Kittle *et al.*, 2017). Wolves indeed exploit anthropogenic features only when the risk of mortality due to human presence becomes a background noise and the human environment becomes favourable from a feeding opportunity perspective (Muhly *et al.*, 2019).

In the face of this quickly changing situation and because of the ongoing expansion of this species in Europe, increasing knowledge on wolf presence and site selection in anthropogenic contexts is currently needed to improve effectiveness of conservation and management of this species.

To investigate this issue, we considered the proximity of wolf packs to urban settlements to test whether wolves still actively avoid human disturbance by settling as far as possible from urban settlements or if, as an alternative, wolves are increasing their tolerance towards humans and do settle without avoiding towns and cities.

We used data from pack distribution of a densely wolf-populated region in Europe, Tuscany (Central Italy), that shows a widespread and long-term monitored wolf population as well as three well-characterized environments (mountain, hill and plain) differing in both magnitude of human presence and availability of natural habitats. To test the hypothesis that wolves avoid areas with higher density of urban settlements, we formulated the following predictions:

- 1 packs distribution would be unequally subdivided among the three macro environments present in the region following the density of urban settlements that are less abundant in mountains and more abundant in plains; moreover, the process of recolonization would be gradual, from least human-inhabited environments to most human-dominated ones;
- 2 packs would not be randomly distributed with respect to urban settlements as they prefer occupying locations as far as possible from humans.

To test the hypothesis that pack distribution is constrained by both the human presence and the intra-specific competition for spatial availability, we predicted that:

- 3 the distance of packs from the nearest urban settlement would be constrained towards stable values by higher wolf density (i.e. across the recolonization process) and by environmental and human factors (i.e. across the three altitudinal ranges).

## Materials and methods

### Study area

Tuscany is a region of Central Italy (Lat. 43° 25' N; Long. 11° 00' E) that extends for 18,513 km<sup>2</sup> excluding the islands (where the wolf is absent).

Tuscany habitats range from mountain to Mediterranean ones, as its elevation on sea level varies from 0 to 2054 m a.s.l. Woods are mostly composed of beech *Fagus sylvatica* and white fir *Abies alba* at higher elevation followed by deciduous oak *Quercus* sp., and chestnut *Castanea sativa* and Mediterranean woods characterized by holm oak *Quercus ilex* and domestic pine *Pinus pinea*. Altogether, woods occupy almost 9000 km<sup>2</sup> and are progressively increasing due to abandonment by farmers of vast areas once cultivated. About 52% of the region is occupied by forests and semi-natural environment, 38% by agricultural areas, 9% by human-dominated areas and 1% by water bodies and wetlands (Tuscany Region, 2022). The protected areas cover almost 10% of the regional territory, for a total area of 2,270 km<sup>2</sup>. Human activity, as well as the dense road network (292 km/100 km<sup>2</sup>), is widespread throughout the territory with a greater urban concentration along the Arno valley. The average human density of the study area is 181 inhabitants/km<sup>2</sup> and specifically of 15 inhabitants/km<sup>2</sup> in the mountain areas, 59 inhabitants/km<sup>2</sup> in hill areas and 328 inhabitants/km<sup>2</sup> in plain areas (Tuscany Region, 2022).

Agriculture and livestock farming are still relevant to the region's economy, free-ranging livestock breeding is practised, with 401,151 sheep and 20,165 goats raised within the region (Berzi, 2018).

Wolves never got extinct in Tuscany. Even during their minimal historical distribution in the 1970s, wolves were reported along the Tyrrhenian coast on the metalliferous hills (between the provinces of Pisa, Livorno and Grosseto) and along the Apennine in the Casentino and Mugello areas (northernmost part of the province of Arezzo and Florence) and in a very small area of Massa Carrara province (Cagnolaro *et al.*, 1974). Boitani & Ciucci (1996) confirmed the presence of wolves in these areas, with an expansion to the neighbouring territories, which included a large part of the Apennine chain and the province of Grosseto. Subsequent investigations (Gazzola & Viviani, 2006; Apollonio, 2013, 2014, 2015, 2016) have been monitoring wolves in this region since year 2005. In this time, the distribution of wolves increased from mountains to hilly and flat areas (Fig. 1) as wolf presence was reported in 29 and 220 municipalities in 1974 and 2016, respectively.

## Data collection

We identified wolf pack locations during a survey conducted between 2014 and 2016 in the whole region, by means of a multiple-method approach (as recommended, *inter alia*, by Duchamp *et al.*, 2011 and Ausband *et al.*, 2014).

We used a combination of camera trapping (Canu *et al.*, 2017; Mattioli *et al.*, 2018), wolf-howling recording and sonogram analysis (Gazzola *et al.*, 2002; Passilongo *et al.*, 2015; Palacios *et al.*, 2016); direct observation and filming, taking advantage of a previous knowledge of the spatial habits of most packs and a network of local collaborators (*i.e.* hunters, shepherds and other volunteers). Each pack

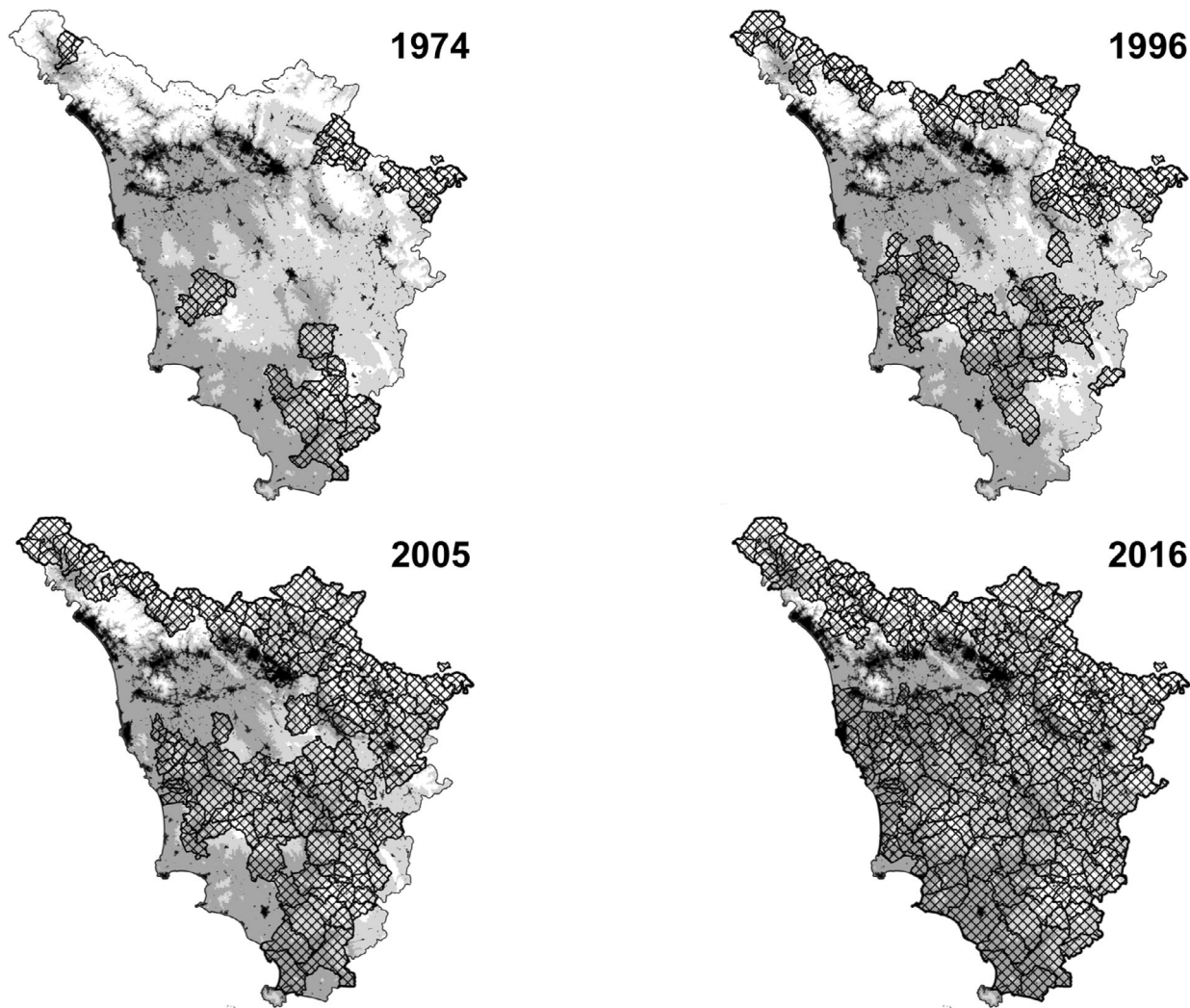
known in previous years or reported by the citizen science network was investigated using the techniques mentioned above, to ensure presence and current location of the territorial pair and the presence of offspring (Table S1).

Camera trapping was conducted on a year-round basis to detect wolf presence within opportunistically selected locations and to ascertain eventual reproduction. Territorial pairs were recognized by observation of marking behaviours (Llaneza, García, & López-Bao, 2014). In cases of uncertainties on pack identity, this approach was integrated by genetic analyses through sampling of dead wolves collected (Scandura, Iacolina, & Apollonio, 2011; Canu *et al.*, 2017). A detailed description of the camera trapping methodology and wolf individual recognition is reported in Canu *et al.* (2017) and Mattioli *et al.* (2018).

Wolf-howling surveys were conducted yearly from June to October, focusing on the previously known or supposed pack's home sites (through the collaborative group's prior knowledge), according to the methodology described by Gazzola *et al.* (2002) and Passilongo *et al.* (2010). For discriminating different packs based on howling responses, we adopted the criteria described in Apollonio *et al.* (2004). Wolf howling provided information on pack reproduction by sonographic analysis of chorus howls (Passilongo *et al.*, 2015; Palacios *et al.*, 2016).

We considered 'pack' each social unit constituted by, at least, a territorial pair. When reproduction was ascertained, we identified the pack location with the rendezvous site, that approximately coincided with the site where pups were detected (*i.e.* the camera trapping site they were filmed or the site they emitted the recorded chorus howl). Conversely, when reproduction was not ascertained, we considered as pack location the site with the maximum number of detections of adults (*i.e.* the camera trapping site where a certain pack was filmed more times).

To analyse the differences in wolf distribution across recolonized areas during different periods, we assigned each pack location to a recolonization step of the Tuscan wolf population, by using the occupancy data at municipal level in 1972 (Cagnolaro *et al.*, 1974), 1996 (Boitani & Ciucci, 1996) and 2006 (Gazzola & Viviani, 2006). These historical occupancy data were based on records of wolf presence reported by citizens and stakeholders. Only in the case of the 2006 survey, wolf occupancy was further verified by means of wolf howling, snow-tracking and genetic analyses (Gazzola & Viviani, 2006). Analogously to our approach, these methods were only used to verify wolf presence where it had been reported by the citizen science network. Thus, the higher reliability and precision of the more modern methods made the results of 2006 (Gazzola & Viviani, 2006) and 2016 (this study) more conservative than the previous surveys. Based on the municipality in which each pack location fell, we assigned to each pack the reference year of the earliest record of occupancy of its municipality. The year of our monitoring (2016) was then assigned to those packs located in areas not previously reported as occupied by wolves (recent recolonization).



**Figure 1** Wolf presence in Tuscany based on municipality, between 1974 and 2016. In white the mountains, in light grey the hills, and in grey the plain. Black dots represent urban settlements, while the black grid shows the municipalities occupied by wolves in the reference year.

### Data analysis

Following our predictions, analyses were performed by a three steps approach.

### Distribution of observed pack locations

Within the first step, we aimed to evaluate pack distribution among three macro-habitats (with different urban settlements presence; Table S2) defined at municipal level by altitudinal ranges (mountain, hill and plain) by comparing through a chi-squared test the observed frequency of pack locations in each habitat, with respect to a frequency distribution proportional to habitat availability in Tuscany. We considered as mountainous area those ranges higher than 600 m a.s.l.; as hills those located between 200 and 600 m a.s.l., and as plain those lower than 200 m a.s.l. Mountains covered 19%

of the region, while hills and plains cover 46% and 35%, respectively (Tuscany Region, 2022). We then assigned each observed pack location to its altitudinal range. This procedure was performed both on the whole set of pack locations and separately for each recolonization step. The available surface for each recolonization step area was calculated by subtracting the surface with the stable presence of wolves of the previous steps from that of the whole region (Fig. 1).

### Effect of urban settlements on pack locations

In the second step, we tested whether pack location distribution was affected by the distance from urban settlements by comparing observed pack locations with randomly generated ones. We used a GIS software (QGIS 3.10 A CORUÑA) to generate 240 random points (from now on control pack locations) distributed among altitudinal ranges in the same

proportions as the observed pack locations. The optimal amount of control pack locations was defined as the number of points needed to stabilize the variance of the distance from urban settlements. The value was found by a visual inspection of a line plot relating distance variance to the number of locations considered. We classified each control pack location by altitudinal range and recolonization step areas, as already described for observed pack location. We then generated the variable ‘presence’, assuming 0 and 1 in control and observed pack locations, respectively. ‘Presence’ was considered as the response variable of a generalized linear model (GLM) with a Logit link function and the predictors described in Table 1 (see Table S5 for their mean and standard error in the observed and control pack locations).

All those independent variables were tested for collinearity. First, we calculated the Pearson correlation coefficient between all possible pairs within the predictor variables considered (Zuur, Ieno, & Smith, 2007). We considered as non-negligible correlations those with an *r* coefficient higher than 0.6 or lower than  $-0.6$  (Zuur *et al.*, 2009a). The surface covered by the nearest urban settlement was collinear with its number of inhabitants (for both any size- and large urban settlements). As the settlement surface had lower significance and score in a Random Forest rank (*varImpPlot* function from the ‘randomForest’ R package), we retained as predictors the number of inhabitants of the nearest urban settlement of any size and that of the nearest large urban settlement.

Then, once the least significant variables were removed, we recalculated Person’s correlation coefficient and repeated this process until no residual correlated pairs remained. Subsequently, we performed a multicollinearity test using the

*corvif* function of the ‘AED’ package (Zuur *et al.*, 2009b) in R software to confirm the absence of multicollinearity among the remaining variables. All VIF values were less than three (see Chapter 26 of Zuur, Ieno, & Smith, 2007) indicating that there was no multicollinearity in the variables tested. All the residual variables were entered as predictors in the GLM stepwise models with backward elimination procedure. Different models were evaluated by combining unrelated predictors in all additive and multiplicative (interactions) ways. The best model was then selected according to Akaike’s information criterion (Burnham & Anderson, 2004; AIC; Burnham, Anderson, & Huyvaert, 2011). We evaluated the relative importance of each predictor included in the best model by computing the Akaike weights from all the models whose AIC differed less than two points from the best one (Burnham & Anderson, 2004; Symonds & Moussalli, 2011). In order to avoid the issues arising from model averaging (see Banner & Higgs, 2017; Dormann *et al.*, 2018), only the results of the best model were discussed. This approach was particularly appropriate in this analysis since our main goal was to describe the possible effect of urban settlements on the observed pack locations and not to predict their distribution. Nonetheless, we still performed a model averaging analysis and included the results in Appendix (Table S6).

### Constraints of the variability of pack location distance from urban settlements

The limits to the free choice of pack location were tested by a comparison of the variability of the distance from the nearest urban settlement. We evaluated whether the coefficient of

**Table 1** Predictor variable acronyms and description

Name	Description
Distance from the nearest urban settlement (dU)	The distance (m) from the nearest urban settlement of any size. We considered as urban settlement any cluster of houses with a number of residents equal or greater than that of the smallest municipality in Tuscany (65 inhabitants)
Distance from the nearest large urban settlement (dLU)	The distance (m) from the nearest large urban settlement. We considered as large urban settlements the biggest urban areas that together accounted for 60% of region inhabitants (ISTAT, 2017). The smallest settlement of this category had 5046 inhabitants (ISTAT, 2017)
Altitude (A)	The altitude (m a.s.l.) of the pack location
Altitudinal range (Ar)	The altitudinal range (categorical): mountains (>600 m a.s.l.), hills (>200 m and <600 m a.s.l.) and plain (<200 m a.s.l.)
Recolonization step (Cs)	The reference year (1972, 1996, 2006 or 2016) of the earliest record of occupancy, based on the municipality the pack was located in
Inhabitants of the nearest urban settlement (pU)	The number of inhabitants of the nearest urban settlement of any size
Inhabitants of the nearest large urban settlement (pLU)	The number of inhabitants of the nearest large urban settlement
Surface of the nearest urban settlement (SU)	The surface (km <sup>2</sup> ) covered by the nearest urban settlement of any size
Surface of the nearest large urban settlement (SLU)	The surface (km <sup>2</sup> ) covered by the nearest large urban settlement
Human density of the nearest urban settlement (DpU)	The density of inhabitants (inhabitants/km <sup>2</sup> ) of the nearest urban settlement of any size
Human density of the nearest large urban settlement (DpLU)	The density of inhabitants (inhabitants/km <sup>2</sup> ) of the nearest large urban settlement

All variables were obtained from the spatial layers freely available at <https://www.regione.toscana.it/geoscopio>.

variation (CV) significantly differed among the four recolonization step areas (as proxies of the number of wolves and their regional density) and the three altitudinal ranges (as example of three different human densities). We computed CV via bootstrapping (with 100 resampling) by using the Boot package (Canty & Ripley, 2014) in R. The estimated means were then compared by ANOVA and Tukey honest significant difference post hoc test (R Core Team, 2022) to find actual differences among paired groups.

## Results

### Distribution of observed pack locations

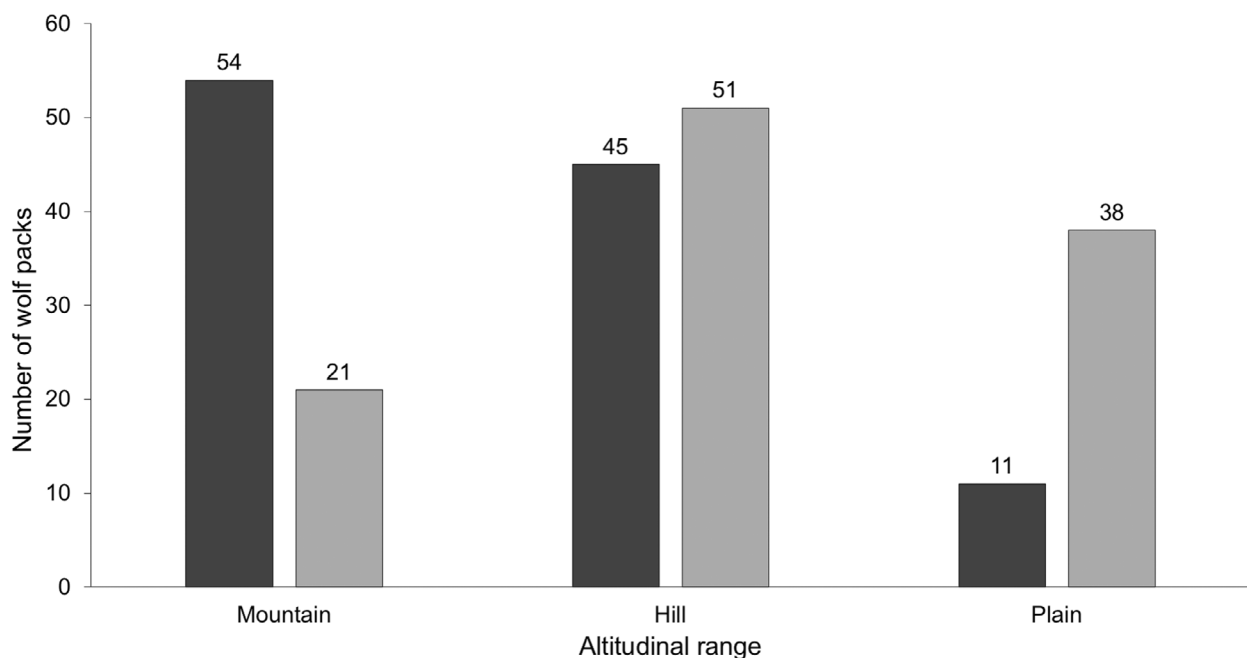
During the monitoring conducted between 2014 and 2016, 110 pack locations were identified. Distribution of pack location sites in the three altitudinal ranges was not proportional to their availability ( $\chi^2 = 71.747$ ;  $P < 0.001$ ) showing a preference for the mountains, where 54 pack location sites were observed over 21 expected. On the hills, 45 pack locations were observed compared with 51 expected. Finally, in the plain we observed 11 pack location instead of the 38 expected (Fig. 2). Accordingly, in the different recolonization step areas the number of packs for each area differed significantly from expectations (Table S4). The number of packs on the mountains was always higher than expected, while those in the plain were always lower than expected. Conversely, the number of packs in the hilly area until 1996 was less than expected, while after 1996, it was higher than expected.

With respect to the recolonization process, packs initially tended to occupy mountains and hills and later started to occupy plains (Table S4).

### Effect of urban settlements on pack location

The best logistic GLM explaining 'presence' probability included as predictors: (1) the distance from the nearest urban settlement of any size, (2) the number of inhabitants of the nearest urban settlement of any size and (3) that of the nearest large urban settlement, (4) the altitude and (5) the interaction between the altitudinal range and distance from the nearest urban settlement of any size (Table 2). Considering the set of models with  $\Delta AIC < 2$  (Table 2), the Akaike weight of the selected predictors averaged 1, 1, 0.72, 0.78 and 1, respectively (Table 3). Conversely, the predictors not included in the best model had much lower weights: 0.30, 0.62 and 0.62 for the distance from the nearest large settlement, the population density of the nearest settlement of any size and that of the nearest large settlement, respectively. The effects described by the best model were consistent with the outcome of the model averaging (Table 3, Table S6).

The probability of pack presence was positively affected by increasing the distance from human settlements and by increasing altitude, while the number of inhabitants of the nearest urban settlement had a negative effect (Table 3). The intensity of the effect of the distance from the nearest urban



**Figure 2** Number of wolf pack in the three altitudinal ranges. Black and grey bars represent the number of observed and expected wolf packs within each altitudinal range, respectively. Distribution of the observed pack locations in the three altitudinal ranges significantly differed from the expected ( $\chi^2 = 71.747$ ;  $P$ -value  $< 0.001$ ).

**Table 2** Multimodel inference of logistic Generalized Linear Models on wolf pack location

Model	d.f.	R <sup>2</sup>	loglik	AIC	ΔAIC	weight
Presence = dU + A + pU + pLU + dU:Ar	7	0.11	197.758	409.52	0.00	0.097
Presence = dU + A + pU + pLU + DpLU+dU:Ar	8	0.11	196.812	409.63	0.11	0.092
Presence = dU + A + pU + pLU + DpU + DpLU+dU:Ar	9	0.12	196.039	410.08	0.56	0.073
Presence = dU + pU + pLU + dU:Ar	6	0.10	-99.060	410.12	0.60	0.072
Presence = dU + dLU + A + pU + DpLU+dU:Ar	8	0.11	197.096	410.20	0.68	0.069
Presence = dU + A + pU + pLU + DpU + dU:Ar	8	0.11	-197.123	410.25	0.73	0.067
Presence = dU + A + pU + DpLU+dU:Ar	7	0.11	-198.143	410.29	0.77	0.066
Presence = dU + dLU + A + pU + pLU + DpLU+dU:Ar	9	0.12	-196.184	410.37	0.85	0.063
Presence = dU + pU + pLU + DpU + dU:Ar	7	0.11	-198.213	410.43	0.91	0.061
Presence = dU + dLU + A + pU + DpU + DpLU+dU:Ar	9	0.12	-196.234	410.47	0.95	0.06
Presence = dU+ dLU + A + pU + pLU + DpU + DpLU+dU:Ar	10	0.12	-195.274	410.55	1.03	0.058
Presence = dU + A + pU + DpU + DpLU+dU:Ar	8	0.11	-197.476	410.96	1.44	0.047
Presence = dU + dLU + A + pU + pLU + dU:Ar	8	0.11	-197.489	410.98	1.46	0.047
Presence = dU + pU + pLU + DpU + DpLU+dU:Ar	8	0.11	-197.554	411.11	1.59	0.044
Presence = dU + pU + pLU + DpLU+dU:Ar	7	0.10	-198.562	411.13	1.61	0.043
Presence = dU + A + pU + dU:Ar	6	0.10	-199.586	411.18	1.66	0.042

dU = distance of the wolf pack location from the nearest urban settlement; dLU = distance of the wolf pack location from the nearest large urban settlement; pU = number of inhabitants of the nearest urban settlement; pLU = number of inhabitants of the nearest large urban settlement; A = altitude of the pack location; DpU = density population of the nearest urban settlement; DpLU = density population of the nearest large urban settlement; Ar = altitudinal range (for more details on each predictor see Table 1); df = degrees of freedom; R<sup>2</sup> = coefficient of determination, the proportion of the dependent variable variability predictable by the model; loglik = log likelihood; AIC = Akaike's information criterion; ΔAIC = the difference between AIC values for two nested models; weight = Akaike weight.

**Table 3** Results of the best logistic generalized linear model on wolf pack location

Predictor	Coefficient estimate	Akaike weight	se	z	P
(Intercept)	-1.687		0.383	-4.403	<0.001
dU	0.0004	1.00	0.0001	3.840	<0.001
pU	-0.0003	1.00	0.0001	-2.302	0.021
pLU	0.000002	0.72	0.0000009	1.888	0.059
A	0.0009	0.78	0.0005	1.612	0.107
dU:Ar (Hill vs. Mountain)	-0.0003	1.00	0.0001	-2.362	0.018
(Hill vs. Plain)	-0.0003		0.0001	-2.005	0.044

dU = distance of wolf pack location from the nearest urban settlement; pU = number of inhabitants of the nearest urban settlement; pLU = number of inhabitants of the nearest large urban settlement; A = altitude of pack location; Ar = altitudinal range (for more details on each predictor see Table 1); Coefficient estimate = estimated β coefficient of the predictor within the best model; Akaike weights = average Akaike weights of each predictor among the models with ΔAIC <2 (Table 2); se = standard error of estimated coefficient; z = z-ratio; P = P-value.

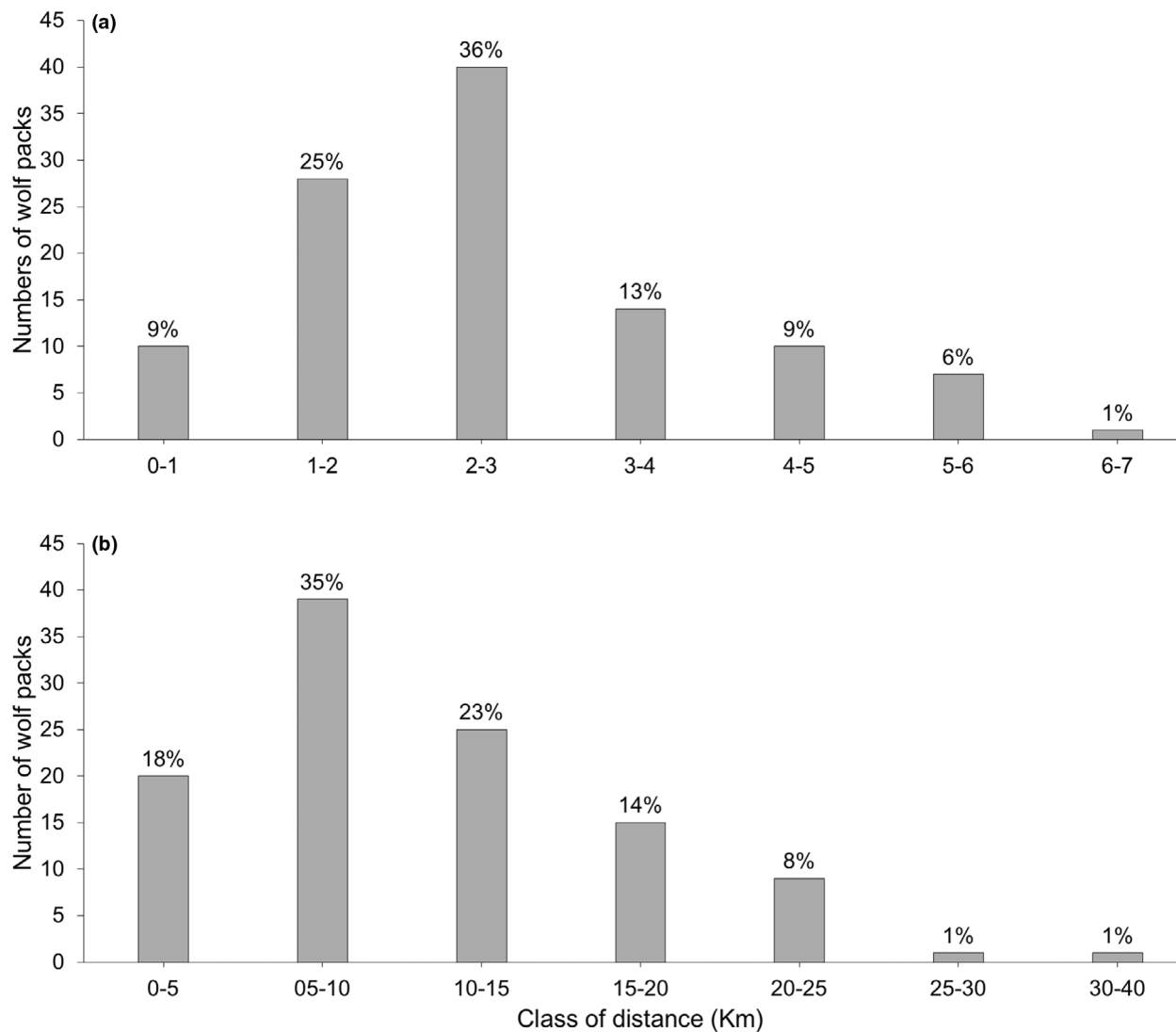
settlement was lower in the hills with respect to mountain and plain.

Wolf packs were located at an average distance of  $2590 \pm 128$  m (mean  $\pm$  standard error) and  $1961 \pm 103$  m from urban settlements of any size, for observed and control pack locations, respectively. Analogously, observed packs were located at an average distance of  $10913 \pm 598$  m from large settlements, while control points were at  $9802 \pm 442$  m from them (Fig. S1 and Table S5). Observed pack locations were located near to settlements with  $565 \pm 85$  inhabitants, while control points were located near settlements with  $14492 \pm 5352$  inhabitants. The 93% of packs were located at less than 5 km from urban settlements of any size. As for large urban settlements, the 18% of the observed pack locations were within 5 km from them (Fig. 3).

### Constraints of the variability of pack location distance from urban settlements

The variability of the distance from the nearest urban settlement was significantly lower in areas recolonized recently (2016) in comparison with those recolonized in previous years ( $F = 138.6$ ; d.f. = 3/396;  $P < 0.001$ ; Fig. 4a and Table S7).

The comparison of the CV among the three macro-habitats (identified by the three altitudinal ranges) showed a statistically significant difference ( $F = 23.61$ ; d.f. = 2/297;  $P < 0.001$ ), with the distance from the nearest urban settlement being significantly less variable in mountains than in the hilly and plain ranges of the Region (Fig. 4b and Table S7).



**Figure 3** Number of wolf pack locations per class of distance, (a) from the nearest urban settlement of any size; (b) from the nearest large urban settlement.

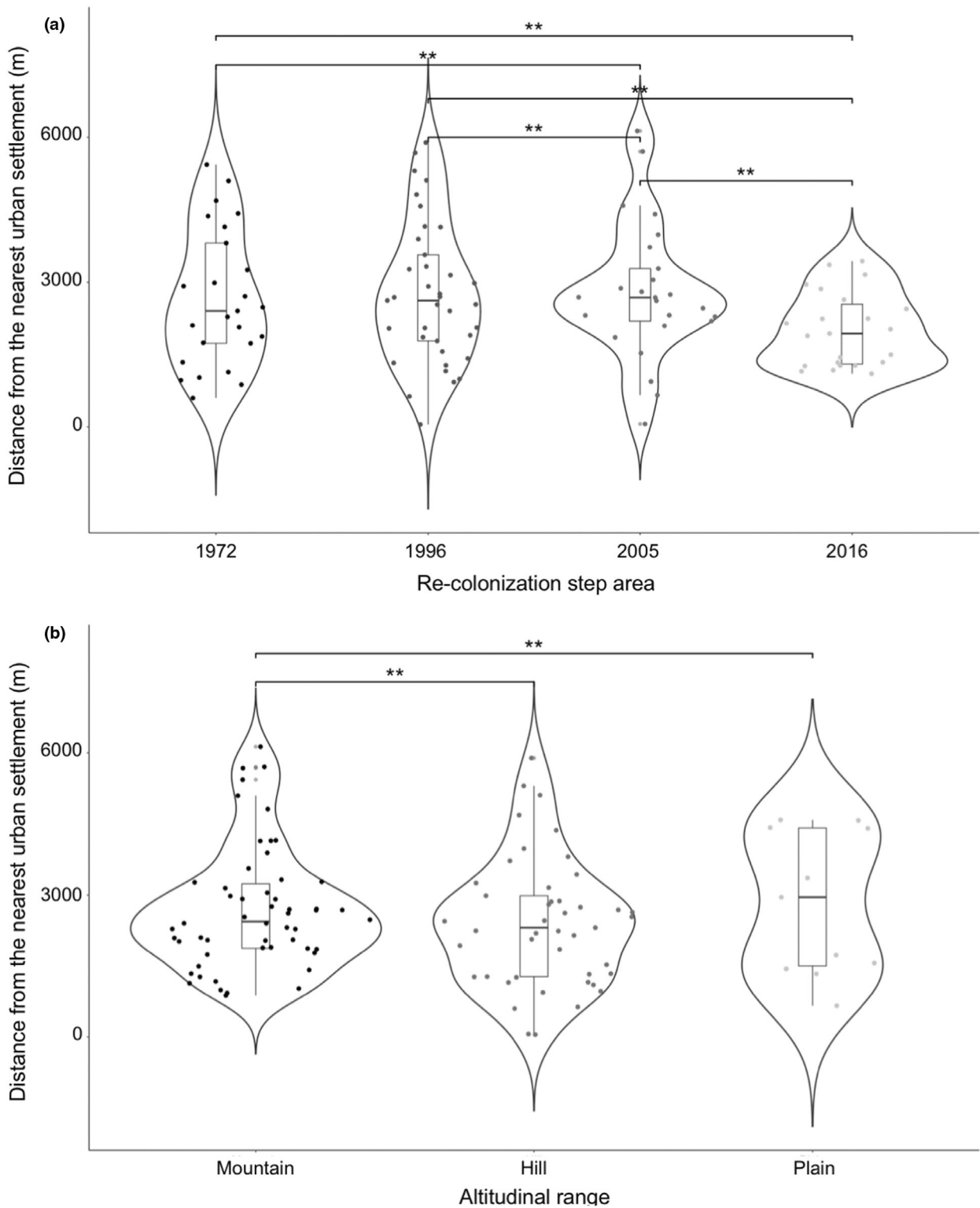
## Discussion

Wolves preferred mountains and tended to avoid plains across all the recolonization steps, while hills were avoided during the first recolonization step and selected during later steps. Proximity with an urban settlement and the number of its inhabitants reduced the likelihood of a wolf pack location. The distance of wolves to the nearest urban settlement was less variable in areas more recently recolonized, where the density of packs was the highest, and the same was true on the mountains with respect to plains and hills.

### Distribution of observed pack locations

The results were in accordance with our first prediction. Mountainous areas were more occupied by wolf packs in

comparison with plain areas, although their availability was lower in all the four recolonization steps. Moreover, the development of recolonization suggested that wolves preferred mountains and, once the latter were mostly occupied, started to locate at lower altitudes as well. Interestingly, this effect concerned hill areas until 1996 and then, as the pack density grew, started to spread in plain as well. Such phenomenon was likely mediated by a density-dependent dispersal, with young wolves being forced to move to lower altitude, more anthropized areas in order to establish new territories. The occupation of plains being lower than expected (particularly evident during the earlier recolonization steps) may be accounted to bottom-up and/or top-down processes. The low prey densities characterizing plains during 70s–90s (Apollonio, Andersen, & Putman, 2010) could have actually limited the potential expansion of wolves. Additionally, the



**Figure 4** Violin plot representation of the distances of wolf pack locations from the nearest urban settlement considering: (a) the four re-colonization steps and (b) the three altitudinal ranges. \*\*The coefficients of variation of the two distributions are significantly different, with a  $P$ -value  $< 0.05$ .

potential of human-caused mortality to strongly hinder wolf population recovery (Quevedo *et al.*, 2019) may indeed be expected to be higher in the areas more densely inhabited by humans (i.e. plains). Nonetheless, the recent overall increase in ungulate communities even in low-altitude environments (Apollonio, Andersen, & Putman, 2010) and the human-caused mortality rates being nowadays unrelated to human density in Tuscany (Musto *et al.*, 2021) may suggest that human-dominated plains are gradually losing their limiting effect on wolf populations.

The tendency to avoid humans may have delayed the recolonization of human-dominated landscapes, leading many researchers to define suitable wolf habitats only forested areas with a low human impact (Mladenoff *et al.*, 1995; Massolo & Meriggi, 1998; Mladenoff & Sickley, 1998; Salvatori *et al.*, 2002; Gehring & Potter, 2005; Potvin *et al.*, 2005; Włodzimierz Jędrzejewski *et al.*, 2005; Karlsson & Sjöström, 2007; Jędrzejewski *et al.*, 2008; Ahmadi, López-Bao, & Kaboli, 2014), where they were in fact confined as ecological refuges (Kerley, Kowalczyk, & Cromsigt, 2012). On the contrary, our data show that after 1996, wolves were increasingly present in anthropized environments (Table S3), which can thus be considered as suitable habitats for wolf presence. It is worth noting that these results describe the actual distribution of stable packs (i.e. social units composed by at least two individuals owing and defending a territory) in relation to human presence. Since our analytical approach did not distinguish between packs with and without ascertained reproduction, further studies are needed to investigate possible differences in resource selection patterns between reproductive and not reproductive packs. We are also aware that our results may have been influenced by not considering the human density changes from 1972 to 2016. Nonetheless, during this period the human density slightly increased in plains but decreased in mountains (Reynaud *et al.*, 2020). This may not only represent a further explanation for the fast recolonization of mountains, but also highlight that wolves expanded in lowland, human-dominated environments when the human density was growing. As habitat selection depends on consumer density and/or resource availability (Avgar, Betini, & Fryxell, 2020), the approach of wild boar to urban areas (Cahill, Llimona, & Gràcia, 2003; Podgórski *et al.*, 2013; Stillfried *et al.*, 2017; Banti *et al.*, 2021) may have favoured wolf expansion in that areas being this species its major prey item in the region (Bassi *et al.*, 2012, 2017).

### Effect of urban settlements on pack location

Among the wolf packs identified in 2016, 70% included at least one small and 18% at least one large urban settlement, respectively, within a 5 km radius, that is the radius of a hypothetical home range of 85–110 km<sup>2</sup> (Ciucci *et al.*, 1997; Corsi, Dupre, & Boitani, 1999; Apollonio *et al.*, 2004; Mattioli *et al.*, 2018).

Although our control points were not of ascertained absence, but rather of undetected presence, the distances of

observed pack locations to the nearest urban settlement differed significantly from the control, in contrast with Theuerkauf *et al.* (2003) but in accordance with our second prediction. The tendency of wolves to locate farther from the nearest urban settlement in comparison with control points is consistent with previous studies showing that human infrastructure distribution negatively affects the likelihood of packs locating in a certain area (Capitani *et al.*, 2006; W. Jędrzejewski *et al.*, 2008; Bassi *et al.*, 2015).

Moreover, the effect of the distance from the nearest urban settlement was lighter in the hilly range. This is probably the outcome of the presence of many wolves in an intensively anthropized environment with a greater availability of refuge areas (small wooded or bushy patches) than in the plain; however, they were highly localized in a patchy landscape (Table S2). This may have forced the wolf to settle where these specific conditions were found, with limited care for human presence. Indeed, the hillside is the range where human density is relatively high (see Section 2.1 and Table S2), but also the second altitude range most occupied by wolves with respect to its availability (Fig. 2).

The number of inhabitants in the nearest urban settlement also significantly influenced wolves' choices on where to locate, indicating that wolves preferred the outskirts of urban settlements with low population numbers (see also Table S5).

### Constraints of the variability of pack location distance from urban settlements

As predicted, the variability of the distance from the nearest urban settlement differed significantly both across areas recolonized in different periods and across macro-habitats (i.e. Altitudinal ranges). Between 1972 and 2016, there was a gradual decrease in the possibility of choosing suitable locations due to the increase in pack density. Since there was a gradual increase in the amount of surface occupied by wolves and thus in the number of wolves themselves along the considered period (Tables S2 and S3), this further supports our hypothesis. That is, as the number of wolves increased, the availability of suitable areas decreased, leading wolves to select suboptimal areas. In contrast to what was predicted for the three altitudinal ranges, we found the least variability of the distance from the nearest urban settlement in the mountain range, considered as the most suitable macro-habitat. This is likely due to a higher density of wolves in this range, which was in fact more occupied than expected (Fig. 2). Thus, packs, having to keep a safe distance from humans, are forced to rearrange their territories to cope also with other packs and prey availability (density-dependent habitat selection, as explained by O'Neil *et al.*, 2020).

### Conclusions

In conclusion, we showed that wolves preferred locating as far as possible from humans but that they occupied locations

relatively close to urban settlements in a densely inhabited region, likely to cope with the intra-specific spatial competition. As a consequence, the presence of wolves, even if conditioned by the presence of man, is spreading into the most anthropized areas without a saturation point being foreseen. It should be noticed that in the plain, we found only 10% of the total pack locations observed; therefore, a further expansion is probable in face of the increase in wolf packs.

Karlsson & Sjöström (2007) showed how attitudes and perceptions of wolves varied with the distance of wolves from respondents. Probably, the impression that wolves are now closer to urban settlements than in the 1990s is also because there are more and more packs in lowland areas, which are also the most anthropized. The increase in pack distribution and the expansion of their range can raise the possibility of encounters between wolves and humans; therefore, this progressive closeness between human beings and wolves, which it is already a major issue for large carnivore conservation, may increase over time. This is true both in Tuscany, where there is a ubiquitous presence of wolves, and in other European areas that are being quickly recolonized by wolves, as this species is able to live both in densely populated plains and in almost abandoned mountains, confirming its adaptability (Muhly *et al.*, 2019). In such context, a proper management of human-wolf conflicts is pivotal in ensuring the conservation of wolves and in preventing a new wave of persecution of the species (Lute *et al.*, 2018). Since risk-enhancing human behaviours are often the main cause of human-predator conflicts (Penteriani *et al.*, 2016), where wolves are recovering after decades of absence it is necessary to encourage an appropriate behaviour of citizens, including a proper management of possible food items as garbage (Mohammadi *et al.*, 2019) and domestic pets (Bassi *et al.*, 2021).

## Acknowledgements

We wish to thank the Tuscany Region Administration for financial support. We are grateful to L. Mattioli, V. Viviani, D. Berzi, S. Luccarini, E. Bassi, P. Bonghi, F. Morimando, F. Ciuti and C. Ambrogi for the data collection. Open access funding was provided by the University of Sassari. MA was financed by the 'Fondo di Ateneo per la ricerca 2020'. RB was financed by the WWTF (Vienna Science and Technology fund Project N: ESR20-009). Open Access Funding provided by Università degli Studi di Sassari within the CRUI-CARE Agreement.

## Conflict of interest

The authors declare no competing interests.

## Author contributions

MA originally formulated the idea. EM, MZ and RB collaborated in imaging statistical analysis. MZ and EM performed statistical analyses. MZ and RB wrote the manuscript. MA

and EM provided editorial advice. MA provided materials and analysis tools.

## Data availability statement

Since they include sensitive information on reproduction sites of wolves, raw data are available from the corresponding author upon reasonable request.

## References

- Ahmadi, M., López-Bao, J.V. & Kaboli, M. (2014). Spatial heterogeneity in human activities favors the persistence of wolves in agroecosystems. (C. N. Jenkins, Ed.). *PLoS One* **9**, e108080.
- Álvares, F., Pereira, E. & Petrucci-Fonseca, F. (2000). O Lobo no Parque internacional Gerês-Xurés. Situação populacional, aspectos ecológicos e perspectivas de conservação. *Galemys* **12**, 223–239.
- Apollonio, M. (2013). Monitoraggio del lupo in Toscana (Relazione). p. 3. Regione Toscana.
- Apollonio, M. (2014). Monitoraggio del lupo in Toscana (Relazione). p. 3. Regione Toscana.
- Apollonio, M. (2015). Monitoraggio del lupo in Toscana (Relazione). p. 3. Regione Toscana.
- Apollonio, M. (2016). Monitoraggio del lupo in Toscana (Relazione). p. 3. Regione Toscana.
- Apollonio, M., Andersen, R. & Putman, R. (2010). *European ungulates and their management in the 21st century*. Cambridge, UK: Cambridge University Press
- Apollonio, M., Mattioli, L., Scandura, M., Mauri, L., Gazzola, A. & Avanzinelli, E. (2004). Wolves in the Casentinesi forests: insights for wolf conservation in Italy from a protected area with a rich wild prey community. *Biol. Conserv.* **120**, 249–260.
- Ausband, D.E., Rich, L.N., Glenn, E.M., Mitchell, M.S., Zager, P., Miller, D.A.W., Waits, L.P., Ackerman, B.B. & Mack, C.M. (2014). Monitoring gray wolf populations using multiple survey methods: monitoring wolf populations. *J. Wild. Manage.* **78**, 335–346.
- Avgar, T., Betini, G.S. & Fryxell, J.M. (2020). Habitat selection patterns are density dependent under the ideal free distribution. (M. Hewison, Ed.). *J. Anim. Ecol.* **89**, 2777–2787.
- Banner, K.M. & Higgs, M.D. (2017). Considerations for assessing model averaging of regression coefficients. *Ecol. Appl.* **28**, 78–93.
- Banti, P., Mazzarone, V., Mattioli, L., Ferretti, M., Lenuzza, A., Lopresti, R., Zaccaroni, M. & Taddei, M. (2021). A Step Change in Wild Boar Management in Tuscany Region, Central Italy. In *Managing wildlife in a changing world*. Kideghesho, J.R. (Ed.). London, UK: IntechOpen.
- Bassi, E., Canu, A., Firmo, I., Mattioli, L., Scandura, M. & Apollonio, M. (2017). Trophic overlap between wolves and free-ranging wolf × dog hybrids in the Apennine Mountains, Italy. *Glob. Ecol. Conserv.* **9**, 39–49.

- Bassi, E., Donaggio, E., Marcon, A., Scandura, M. & Apollonio, M. (2012). Trophic niche overlap and wild ungulate consumption by red fox and wolf in a mountain area in Italy. *Mamm. Biol.* **77**, 369–376.
- Bassi, E., Pervan, I., Ugarković, D., Kavčić, K., Maksan, M.T., Krofel, M. & Šprem, N. (2021). Attacks on hunting dogs: the case of wolf–dog interactions in Croatia. *Eur. J. Wildl. Res.* **67**, 1–9.
- Bassi, E., Willis, S.G., Passilongo, D., Mattioli, L. & Apollonio, M. (2015). Predicting the spatial distribution of wolf (*Canis lupus*) breeding areas in a mountainous region of central Italy. (B. L. Allen, Ed.). *PLoS One*. **10**, e0124698.
- Benson, J.F., Mahoney, P.J. & Patterson, B.R. (2015). Spatiotemporal variation in selection of roads influences mortality risk for canids in an unprotected landscape. *Oikos* **124**, 1664–1673.
- Benson, J.F., Mills, K.J. & Patterson, B.R. (2015). Resource selection by wolves at dens and rendezvous sites in Algonquin park, Canada. *Biol. Conserv.* **182**, 223–232.
- Berzi, D. (2018). Identificazione e mappatura delle aree di criticità al fine di studiare il conflitto tra lupo e predatori protetti e il bestiame domestico in toscana (Relazione tecnica). p. 36. Regione Toscana.
- Bisi, J., Kurki, S., Svensberg, M. & Liukkonen, T. (2007). Human dimensions of wolf (*Canis lupus*) conflicts in Finland. *Eur. J. Wildl. Res.* **53**, 304–314.
- Blanco, J.C. & Cortés, Y. (2007). Dispersal patterns, social structure and mortality of wolves living in agricultural habitats in Spain. *J. Zool.* **273**, 114–124.
- Boitani, L. (2000). *Action plan for the conservation of wolves in Europe (Canis lupus)*. p 81. Strasbourg, France: Council of Europe.
- Boitani, L. & Ciucci, P. (1995). Comparative social ecology of feral dogs and wolves. *Ethol. Ecol. Evol.* **7**, 49–72.
- Boitani, L. & Ciucci, P. (1996). Programma di ricerca e gestione del lupo in Toscana. (Relazione finale). p. 210. Dip.Agric: Regione Toscana, Firenze.
- Breitenmoser, U. (1998). Large predators in the Alps: the fall and rise of man's competitors. *Biol. Conserv.* **83**, 279–289.
- Bruskotter, J.T. & Shelby, L.B. (2010). Human dimensions of large carnivore conservation and management: introduction to the special issue. *Hum. Dimensions Wildl.* **15**, 311–314.
- Burnham, K.P. & Anderson, D.R. (2004). Multimodel inference: understanding AIC and BIC in model selection. *Sociol. Methods Res.* **33**, 261–304.
- Burnham, K.P., Anderson, D.R. & Huyvaert, K.P. (2011). AIC model selection and multimodel inference in behavioral ecology: some background, observations, and comparisons. *Behav. Ecol. Sociobiol.* **65**, 23–35.
- Cagnolaro, L., Rosso, D., Spagnesi, M. & Venturi, B. (1974). Investigation on the wolf (*Canis lupus*) distribution in Italy and in Canton Ticino and Canton Grigioni (Switzerland). *Ricerche di Biologia della Selvaggina* **59**, 1–75.
- Cahill, S., Llimona, F. & Gràcia, J. (2003). Spacing and nocturnal activity of wild boar *Sus scrofa* in a Mediterranean metropolitan park. *Wildl. Biol.* **9**, 3–13.
- Canty, A. & Ripley, B. (2014). Bootstrap R (S-Plus) functions.
- Canu, A., Mattioli, L., Santini, A., Apollonio, M. & Scandura, M. (2017). ‘Video-scats’: combining camera trapping and non-invasive genotyping to assess individual identity and hybrid status in gray wolf. *Wildl. Biol.* **2017**, 1–9.
- Capitani, C., Mattioli, L., Avanzinelli, E., Gazzola, A., Lamberti, P., Mauri, L., Scandura, M., Viviani, A. & Apollonio, M. (2006). Selection of rendezvous sites and reuse of pup raising areas among wolves *Canis lupus* of north-eastern Apennines, Italy. *Acta Theriol.* **51**, 395–404.
- Carreira, R. & Petrucci-Fonseca, F. (2000). Lobo na região oeste de Trás-os-Montes (Portugal). *Galemys* **12**, 123–134.
- Carricondo-Sanchez, D., Zimmermann, B., Wabakken, P., Eriksen, A., Milleret, C., Ordiz, A., Sanz-Pérez, A. & Wikenros, C. (2020). Wolves at the door? Factors influencing the individual behavior of wolves in relation to anthropogenic features. *Biol. Conserv.* **244**, 108514.
- Cayuela, L. (2004). Habitat evaluation for the Iberian wolf *Canis lupus* in Picos de Europa National Park, Spain. *Appl. Geogr.* **24**, 199–215.
- Chapron, G., Kaczensky, P., Linnell, J.D.C., von Arx, M., Huber, D., Andrén, H., López-Bao, J.V. et al. (2014). Recovery of large carnivores in Europe's modern human-dominated landscapes. *Science* **346**, 1517–1519.
- Chavez, A.S. & Gese, E.M. (2006). Landscape use and movements of wolves in relation to livestock in a wildland–agriculture matrix. *J. Wildl. Manage.* **70**, 1079–1086.
- Ciucci, P., Boitani, L., Francisci, F. & Andreoli, G. (1997). Home range, activity and movements of a wolf pack in Central Italy. *J. Zool.* **243**, 803–819.
- Corsi, F., Dupre, E. & Boitani, L. (1999). A large-scale model of wolf distribution in Italy for conservation planning. *Conserv. Biol.* **13**, 150–159.
- Dormann, C.F., Calabrese, J.M., Guillera-Aroita, G., Matechou, E., Bahn, V., Bartoń, K., Beale, C.M., Ciuti, S., Elith, J., Gerstner, K., Guelat, J., Keil, P., Lahoz-Monfort, J.J., Pollock, L.J., Reineking, B., Roberts, D.R., Schröder, B., Thuiller, W., Warton, D.I., Wintle, B.A., Wood, S.N., Wüest, R.O. & Hartig, F. (2018). Model averaging in ecology: a review of Bayesian, information-theoretic, and tactical approaches for predictive inference. *Ecol. Monogr.* **88**, 485–504.
- Duchamp, C., Boyer, J., Briaudet, P.-E., Leonard, Y., Moris, P., Bataille, A., Dahier, T., Delacour, G., Millisher, G., Miquel, C., Poillot, C. & Marboutin, E. (2011). Wolf monitoring in France: a dual frame process to survey time- and space-related changes in the population. *Hystrix* **23**, 14–28.
- Eggermann, J., da Costa, G.F., Guerra, A.M., Kirchner, W.H. & Petrucci-Fonseca, F. (2011). Presence of Iberian wolf (*Canis lupus signatus*) in relation to land cover, livestock and human influence in Portugal. *Mamm. Biol.* **76**, 217–221.

- Fernández-Gil, A., Quevedo, M., Barrientos, L.M., Nuño, A., Naves, J., de Gabriel, M., Ordiz, A. & Revilla, E. (2020). Pack size in humanized landscapes: the Iberian wolf population. *Wildl. Biol.*, **2020**, wlb.00594.
- Ferreiro-Arias, I. & Llana, L. (*submitted*). Walking among humans: wolf daily movements in a highly humanized landscape.
- Filla, M., Premier, J., Magg, N., Dupke, C., Khorozyan, I., Waltert, M., Bufka, L. & Heurich, M. (2017). Habitat selection by Eurasian lynx (*Lynx lynx*) is primarily driven by avoidance of human activity during day and prey availability during night. *Ecol. Evol.* **7**, 6367–6381.
- Gazzola, A., Avanzinelli, E., Mauri, L., Scandura, M. & Apollonio, M. (2002). Temporal changes of howling in south European wolf packs. *Ital. J. Zool.* **69**, 157–161.
- Gazzola, A. & Viviani, A. (2006). *Indagine sulla presenza storica e attuale del lupo (Canis lupus) in Toscana. (Relazione)*. Regione Toscana, Firenze: Direzione Generale Sviluppo Economico, Settore Faunistico Venatorio, Pesca Dilettantistica, Servizi alle Imprese.62.
- Gehring, T.M. & Potter, B.A. (2005). Wolf habitat analysis in Michigan: an example of the need for proactive land management for carnivore species. *Wildl. Soc. Bull.* **33**, 1237–1244.
- Gippoliti, S., Brito, D., Cerfolli, F., Franco, D., Kryštufek, B. & Battisti, C. (2018). Europe as a model for large carnivores conservation: is the glass half empty or half full? *J. Nat. Conserv.* **41**, 73–78.
- ISTAT. (2017). *Forme, livelli e dinamiche dell'urbanizzazione in Italia*. Rome, Italy: Istituto nazionale di statistica. ISBN 978-88-458-1916-2.
- Jędrzejewski, W., Jędrzejewska, B., Zawadzka, B., Borowik, T., Nowak, S. & Mysłajek, R.W. (2008). Habitat suitability model for Polish wolves based on long-term national census. *Anim. Conserv.* **11**, 377–390.
- Jędrzejewski, W., Niedzialkowska, M., Mysłajek, R.W., Nowak, S. & Jędrzejewska, B. (2005). Habitat selection by wolves *Canis lupus* in the uplands and mountains of southern Poland. *Acta Theriol.* **50**, 417–428.
- Kaartinen, S., Antikainen, H. & Kojola, I. (2015). Habitat model for a recolonizing wolf (*Canis lupus*) population in Finland. *Annales Zoologici Fennici* **52**, 77–89.
- Karlsson, J. & Sjöström, M. (2007). Human attitudes towards wolves, a matter of distance. *Biol. Conserv.* **137**, 610–616.
- Kerley, G.I.H., Kowalczyk, R. & Cromsigt, J.P.G.M. (2012). Conservation implications of the refugee species concept and the European bison: king of the forest or refugee in a marginal habitat? *Ecography* **35**, 519–529.
- Kittle, A.M., Anderson, M., Avgar, T., Baker, J.A., Brown, G.S., Hagens, J., Iwachewski, E., Moffatt, S., Mosser, A., Patterson, B.R., Reid, D.E.B., Rodgers, A.R., Shuter, J., Street, G.M., Thompson, I.D., Vander Vennen, L.M. & Fryxell, J.M. (2017). Landscape-level wolf space use is correlated with prey abundance, ease of mobility, and the distribution of prey habitat. *Ecosphere* **8**, 1–17.
- Klees van Bommel, J., Badry, M., Ford, A.T., Golumbia, T. & Burton, A.C. (2020). Predicting human-carnivore conflict at the urban-wildland interface. *Glob. Ecol. Conserv.* **24**, e01322.
- Kojola, I., Hallikainen, V., Mikkola, K., Gurarie, E., Heikkinen, S., Kaartinen, S., Nikula, A. & Nivala, V. (2016). Wolf visitations close to human residences in Finland: the role of age, residence density, and time of day. *Biol. Conserv.* **198**, 9–14.
- Kuijper, D.P.J., Sahlén, E., Elmhagen, B., Chamaillé-Jammes, S., Sand, H., Lone, K. & Cromsigt, J.P.G.M. (2016). Paws without claws? Ecological effects of large carnivores in anthropogenic landscapes. *Proc. R. Soc. B* **283**, 20161625.
- Kusak, J., Skrbinšek, A.M. & Huber, D. (2005). Home ranges, movements, and activity of wolves (*Canis lupus*) in the Dalmatian part of Dinarids, Croatia. *Eur. J. Wildl. Res.* **51**, 254–262.
- Lesmerises, F., Dussault, C. & St-Laurent, M.-H. (2012). Wolf habitat selection is shaped by human activities in a highly managed boreal forest. *For. Ecol. Manage.* **276**, 125–131.
- Llana, L., García, E.J. & López-Bao, J.V. (2014). Intensity of territorial marking predicts wolf reproduction: implications for wolf monitoring. (C. Sueur, Ed.). *PLoS One* **9**, e93015.
- Llana, L., López-Bao, J.V. & Sazatornil, V. (2012). Insights into wolf presence in human-dominated landscapes: the relative role of food availability, humans and landscape attributes: wolves in human-dominated landscapes. *Divers. Distrib.* **18**, 459–469.
- Lovari, S., Sforzi, A., Scala, C. & Fico, R. (2007). Mortality parameters of the wolf in Italy: does the wolf keep himself from the door? *J. Zool.* **272**, 117–124.
- Lute, M.L., Carter, N.H., López-Bao, J.V. & Linnell, J.D.C. (2018). Conservation professionals agree on challenges to coexisting with large carnivores but not on solutions. *Biol. Conserv.* **218**, 223–232.
- Massolo, A. & Meriggi, A. (1998). Factors affecting habitat occupancy by wolves in northern Apennines (northern Italy): a model of habitat suitability. *Ecography* **21**, 97–107.
- Mattioli, L., Canu, A., Passilongo, D., Scandura, M. & Apollonio, M. (2018). Estimation of pack density in grey wolf (*Canis lupus*) by applying spatially explicit capture-recapture models to camera trap data supported by genetic monitoring. *Front. Zool.* **15**, 38.
- Mech, L.D. (2017). Where can wolves live and how can we live with them? *Biol. Conserv.* **210**, 310–317.
- Mladenoff, D.J. & Sickley, T.A. (1998). Assessing potential gray wolf restoration in the northeastern United States: a spatial prediction of favorable habitat and potential population levels. *J. Wildl. Manage.* **62**, 1.
- Mladenoff, D.J., Sickley, T.A., Haight, R.G. & Wydeven, A.P. (1995). A regional landscape analysis and prediction of favorable gray wolf habitat in the northern Great Lakes region. *Conserv. Biol.* **9**, 279–294.

- Mohammadi, A., Kaboli, M., Sazatornil, V. & López-Bao, J.V. (2019). Anthropogenic food resources sustain wolves in conflict scenarios of Western Iran. *PLoS One* **14**, e0218345.
- Muhly, T.B., Johnson, C.A., Hebblewhite, M., Neilson, E.W., Fortin, D., Fryxell, J.M., Latham, A.D.M., Latham, M.C., McLoughlin, P.D., Merrill, E., Paquet, P.C., Patterson, B.R., Schmiegelow, F., Scurrah, F. & Musiani, M. (2019). Functional response of wolves to human development across boreal North America. *Ecol. Evol.* **9**, 10801–10815.
- Musto, C., Cerri, J., Galaverni, M., Caniglia, R., Fabbri, E., Mucci, N., Apollonio, M., Bonilauri, P., Maioli, G., Fontana, M.C., Gelmini, L., Ciuti, F., Prosperi, A., Garbarino, C., Rossi, A., Fiorentini, L., Berzi, D., Meriardi, G. & Delogu, M. (2021). Men and wolves: are anthropogenic causes the main driver of wolf mortality in human-dominated landscapes in Italy? (preprint). *EcoEvoRxiv*.
- Navarro, L.M. & Pereira, H.M. (2015). Rewilding abandoned landscapes in Europe. In: *Rewilding european landscapes: 3–23*. Cham: Springer.
- Newsome, T.M., Dellinger, J.A., Pavey, C.R., Ripple, W.J., Shores, C.R., Wirsing, A.J. & Dickman, C.R. (2015). The ecological effects of providing resource subsidies to predators: resource subsidies and predators. *Glob. Ecol. Biogeogr.* **24**, 1–11.
- Newton, E.J., Patterson, B.R., Anderson, M.L., Rodgers, A.R., Vander Vennen, L.M. & Fryxell, J.M. (2017). Compensatory selection for roads over natural linear features by wolves in northern Ontario: implications for caribou conservation. (E. Z. Cameron, Ed.). *PLoS One* **12**, e0186525.
- Oakleaf, J.K., Murray, D.L., Oakleaf, J.R., Bangs, E.E., Mack, C.M., Smith, D.W., Fontaine, J.A., Jimenez, M.D., Meier, T.J. & Niemeyer, C.C. (2006). Habitat selection by recolonizing wolves in the northern Rocky Mountains of the United States. *J. Wildl. Manage.* **70**, 554–563.
- O'Neil, S.T., Vucetich, J.A., Beyer, D.E., Hoy, S.R. & Bump, J.K. (2020). Territoriality drives preemptive habitat selection in recovering wolves: implications for carnivore conservation. (E. Vander Wal, Ed.). *J. Anim. Ecol.* **89**, 1433–1447.
- Ordiz, A., Støen, O.-G., Delibes, M. & Swenson, J.E. (2011). Predators or prey? Spatio-temporal discrimination of human-derived risk by brown bears. *Oecologia* **166**, 59–67.
- Palacios, V., López-Bao, J.V., Llana, L., Fernández, C. & Font, E. (2016). Decoding group vocalizations: the acoustic energy distribution of chorus howls is useful to determine wolf reproduction. (D. M. Higgs, Ed.). *PLoS One* **11**, e0153858.
- Passilongo, D., Bucciatti, A., Dessi-Fulgheri, F., Gazzola, A., Zaccaroni, M. & Apollonio, M. (2010). The acoustic structure of wolf howls in some eastern Tuscany (Central Italy) free ranging packs. *Bioacoustics* **19**, 159–175.
- Passilongo, D., Mattioli, L., Bassi, E., Szabó, L. & Apollonio, M. (2015). Visualizing sound: counting wolves by using a spectral view of the chorus howling. *Front. Zool.* **12**, 22.
- Penteriani, V., Delgado, M.D.M., Pinchera, F., Naves, J., Fernández-Gil, A., Kojola, I., Härkönen, S., Norberg, H., Frank, J., Fedriani, J.M., Sahlén, V., Støen, O., Swenson, J.E., Wabakken, P., Pellegrini, M., Herrero, S. & López-Bao, J.V. (2016). Human behaviour can trigger large carnivore attacks in developed countries. *Sci. Rep.* **6**, 1–8.
- Podgórski, T., Baś, G., Jędrzejewska, B., Sönnichsen, L., Śnieżko, S., Jędrzejewski, W. & Okarma, H. (2013). Spatiotemporal behavioral plasticity of wild boar (*Sus scrofa*) under contrasting conditions of human pressure: primeval forest and metropolitan area. *J. Mamm.* **94**, 109–119.
- Potvin, M.J., Drummer, T.D., Vucetich, J.A., Beyer, D.E., Peterson, R.O. & Hammill, J.H. (2005). Monitoring and habitat analysis for wolves in upper Michigan. (Russell, Ed.). *J. Wildl. Manage.* **69**, 1660–1669.
- Promberger, C. & Hofer, D. (1994). *Ein Managementplan für Wölfe in Brandenburg*. München: Wildbiolog. Ges.
- Quevedo, M., Echegaray, J., Fernández-Gil, A., Leonard, J.A., Naves, J., Ordiz, A., Revilla, E. & Vilà, C. (2019). Lethal management may hinder population recovery in Iberian wolves. *Biodivers. Conserv.* **28**, 415–432.
- R Core Team (2022). *R: A language and environment for statistical computing*. Vienna, Austria: R Foundation for Statistical Computing. <https://www.R-project.org/>.
- Region, T. (2022). Regione Toscana-Geoscopio (Strumento webgis). Regione Toscana, <https://www.regione.toscana.it/-/geoscopio>.
- Reynaud, C., Miccoli, S., Benassi, F., Naccarato, A. & Salvati, L. (2020). Unravelling a demographic ‘Mosaic’: spatial patterns and contextual factors of depopulation in Italian Municipalities, 1981–2011. *Ecol. Indic.* **115**, 106356.
- Ripple, W.J., Estes, J.A., Beschta, R.L., Wilmers, C.C., Ritchie, E.G., Hebblewhite, M., Berger, J., Elmhagen, B., Letnic, M., Nelson, M.P., Schmitz, O.J., Smith, D.W., Wallach, A.D. & Wirsing, A.J. (2014). Status and ecological effects of the world's largest carnivores. *Science* **343**, 1241484.
- Salvatori, V., Corsi, F., Milton, E. & Boitani, L. (2002). Use of satellite images for regional modelling of conservation areas for wolves in the Carpathian Mountains, Central Europe. Presented at the Information for sustainability and development, 29th international symposium on remote sensing of environment. Buenos Aires, Argentina.
- Sazatornil, V., Rodríguez, A., Klaczek, M., Ahmadi, M., Álvares, F., Arthur, S., Blanco, J.C., Borg, B.L., Cluff, D., Cortés, Y., García, E.J., Geffen, E., Habib, B., Iliopoulos, Y., Kaboli, M., Krofel, M., Llana, L., Marucco, F., Oakleaf, J.K., Person, D.K., Potočnik, H., Ražen, N., Rio-Maior, H., Sand, H., Unger, D., Wabakken, P. & López-Bao, J.V. (2016). The role of human-related risk in breeding site selection by wolves. *Biol. Conserv.* **201**, 103–110.
- Scandura, M., Iacolina, L. & Apollonio, M. (2011). Genetic diversity in the European wild boar *Sus scrofa*: phylogeography, population structure and wild x domestic

- hybridization: genetic variation in European wild boar. *Mamm. Rev.* **41**, 125–137.
- Stillfried, M., Gras, P., Börner, K., Göritz, F., Painer, J., Röllig, K., Wenzler, M., Hofer, H., Ortman, S. & Kramer-Schadt, S. (2017). Secrets of success in a landscape of fear: urban wild boar adjust risk perception and tolerate disturbance. *Front. Ecol. Evol.* **5**, 157.
- Symonds, M.R. & Moussalli, A. (2011). A brief guide to model selection, multimodel inference and model averaging in behavioural ecology using Akaike's information criterion. *Behav. Ecol. Sociobiol.* **65**, 13–21.
- Theuerkauf, J., Jędrzejewski, W., Schmidt, K. & Gula, R. (2003). Spatiotemporal segregation of wolves from humans in the Białowieża Forest (Poland). *J. Wildl. Manage.* **67**, 706–716.
- Theuerkauf, J., Rouys, S. & Jędrzejewski, W. (2003). Selection of den, rendezvous, and resting sites by wolves in the Białowieża Forest, Poland. *Can. J. Zool.* **81**, 163–167.
- Treves, A., Langenberg, J.A., López-Bao, J.V. & Rabenhorst, M.F. (2017). Gray wolf mortality patterns in Wisconsin from 1979 to 2012. *J. Mamm.* **98**, 17–32.
- Treves, A., Naughton-Treves, L., Harper, E.K., Mladenoff, D.J., Rose, R.A., Sickley, T.A. & Wydeven, A.P. (2004). Predicting human-carnivore conflict: a spatial model derived from 25 years of data on wolf predation on livestock. *Conserv. Biol.* **18**, 114–125.
- Whittington, J., St. Clair, C.C. & Mercer, G. (2005). Spatial responses of wolves to roads and trails in mountain valleys. *Ecol. Appl.* **15**, 543–553.
- Zuur, A.F., Ieno, E.N. & Smith, G.M. (2007). Principal component analysis and redundancy analysis. In *Analysing Ecological Data*: 193–224. New York, NY: Springer New York.
- Zuur, A.F., Ieno, E.N., Walker, N.J., Saveliev, A.A. & Smith, G.M. (2009a). *Mixed effects models and extensions in ecology with R*, Vol. **574**. New York, NY: Springer.
- Zuur, A.F., Ieno, E.N., Walker, N.J., Saveliev, A.A. & Smith, G.M. (2009b). GLM and GAM for absence–presence and proportional data. In *Mixed effects models and extensions in ecology with R*. 245–259. New York, NY: Springer.

## Supporting information

Additional supporting information may be found online in the Supporting Information section at the end of the article.

**Table S1.** Detailed effort and regional results of each pack known in years or reported by the citizen science network integrated survey.

**Table S2.** Indicators of human presence within the considered altitudinal ranges.

**Table S3.** Indicators of human presence within the areas available during each re-colonization step (see the text for more details).

**Table S4.** Chi-square test results of the comparison between expected and observed wolf pack location frequency distribution in the three altitudinal ranges and in the four re-colonization step areas.

**Table S5.** Means and standard errors of all continuous variables used in the Generalized Linear Models used on wolf pack location.

**Table S6.** Results of the model averaging among the set of equivalent Generalized Linear Models ( $\Delta AIC < 2$ ) on wolf pack location.

**Table S7.** Post hoc tests between the Coefficients of Variation of the distance from the nearest urban settlement, among the three different altitudinal ranges and the four different re-colonization steps.

**Figure S1.** Violin plot representation of the distances of wolf pack locations from the nearest urban settlement; in black the observed wolf pack location and in grey the control wolf pack location.