

Article

The Endemic Vascular Flora of Sardinia: A Dynamic Checklist with an Overview of Biogeography and Conservation Status

Mauro Fois ¹, Emmanuele Farris ^{2,*}, Giacomo Calvia ¹, Giuliano Campus ³, Giuseppe Fenu ¹, Marco Porceddu ^{1,4} and Gianluigi Bacchetta ^{1,4}

¹ Centre for the Conservation of Biodiversity (CCB), Department of Life and Environmental Sciences, University of Cagliari, Viale S. Ignazio da Laconi 11-13, 09123 Cagliari, Italy; mfois@unica.it (M.F.); giacomo.calvia@gmail.com (G.C.); gfenu@unica.it (G.F.); porceddu.marco@unica.it (M.P.); bacchet@unica.it (G.B.)

² Department of Chemistry and Pharmacy, University of Sassari, Via Piandanna 4, 07100 Sassari, Italy

³ Independent Researcher, Via G. Rossini 69, 09045 Quartu Sant'Elena, Italy; 54.campus@libero.it

⁴ Sardinian Germplasm Bank (BG-SAR), Hortus Botanicus Karalitanus (HBK), University of Cagliari, Viale S. Ignazio da Laconi, 9-11, 09123 Cagliari, Italy

* Correspondence: emfa@uniss.it; Tel.: +39-079-228-675

Abstract: The vascular flora of Sardinia has been investigated for more than 250 years, with particular attention to the endemic component due to their phylogeographic and conservation interest. However, continuous changes in the floristic composition through natural processes, anthropogenic drivers or modified taxonomical attributions require constant updating. We checked all available literature, web sources, field, and unpublished data from the authors and acknowledged external experts to compile an updated checklist of vascular plants endemic to Sardinia. Life and chorological forms as well as the conservation status of the updated taxa list were reported. Sardinia hosts 341 taxa (15% of the total native flora) endemic to the Tyrrhenian Islands and other limited continental territories; 195 of these (8% of the total native flora) are exclusive to Sardinia. Asteraceae (50 taxa) and Plumbaginaceae (42 taxa) are the most representative families, while the most frequent life forms are hemicryptophytes (118 taxa) and chamaephytes (106 taxa). The global conservation status, available for 201 taxa, indicates that most endemics are under the 'Critically Endangered' (25 taxa), 'Endangered' (31 taxa), or 'Least Concern' (90 taxa) IUCN categories. This research provides an updated basis for future biosystematics, taxonomic, biogeographical, and ecological studies and in supporting more integrated and efficient policy tools.

Keywords: Mediterranean flora; endemic plants; IUCN assessments; island biogeography; plant conservation; Tyrrhenian Islands; biological forms; plant evolution and distribution; plant diversity

Citation: Fois, M.; Farris, E.; Calvia, G.; Campus, G.; Fenu, G.; Porceddu, M.; Bacchetta, G. The Endemic Vascular Flora of Sardinia: A Dynamic Checklist with an Overview of Biogeography and Conservation Status. *Plants* **2022**, *11*, 601. <https://doi.org/10.3390/plants11050601>

Academic Editor: Mingjian Yu

Received: 03 February

Accepted: 21 February

Published: 23 February 2022

Publisher's Note: MDPI stays neutral with regard to jurisdictional claims in published maps and institutional affiliations.



Copyright: © 2022 by the author. Licensee MDPI, Basel, Switzerland. This article is an open access article distributed under the terms and conditions of the Creative Commons Attribution (CC BY) license (<https://creativecommons.org/licenses/by/4.0/>).

1. Introduction

The concept of 'endemism' is apparently simple but is actually problematic [1]. Previous studies on Mediterranean endemic vascular plants have led to two main approaches in defining this concept. The first approach attempted to give weight to the time of origin of a given endemic taxon [2,3]. On this basis, palaeoendemic (systematically isolated species), schizoendemic (phenotypically and karyologically similar species originated by allopatric speciation from a widespread ancestor), and neoendemic (recently diversified species or still diversifying lineages) taxa were defined. However, there is lack of phylogenetic and phylogeographic studies for many taxa, and thus the feasibility of this approach is far from being achieved, despite the increasing number of recent scientific papers that have shed light on this crucial aspect (e.g., [4–8]). The first attempt to organically describe the endemic vascular flora of Sardinia (consisting in the presen-

tation of 202 taxa on the Bulletin of the Sardinian Society of Natural Sciences by Arrigoni et al. [9]) was based on this first approach. Although a valid milestone for the taxonomic, nomenclatural, ecological, and geographical description of a huge contingent of endemic taxa, the work of Arrigoni et al. [9] did not produce a satisfactory and coherent synthesis [10], the main reason being that it was based on some merely speculative assumptions.

More recently, a second approach has prevailed, based on the current distribution range of a given taxon, regardless of its age [11,12]. This concept is often used to define taxa whose geographic range is markedly more restricted than the average distribution of systematically comparable taxa. The definition is therefore inherently relative because the scale at which a taxon is restricted has to be defined subjectively (e.g., [2,12–14]). According to this approach, Thompson [12] recognised four categories: narrow, disjunct, regional, and Mediterranean endemic plants.

The categories originated by the two approaches are neither comparable nor overlapping. For instance, a narrow endemic plant could be either a palaeoendemic (e.g., *Ribes sardoum* Martelli), a schizoendemic (e.g., *Silene ichnusae* Brullo, De Marco & De Marco f.), or a neoendemic (e.g., *Anchusa sardoa* (Illario) Selvi & Bigazzi) [15–17]. In summary, the concept of endemism more used at present (and adopted in this paper) is a function of the spatial scale used to describe the restriction of the distribution of certain taxa to a definite sized area [18]. To which territory a taxon is endemic may be defined according to the specific study aim. For instance, a checklist of plants endemic to a country or a region can be useful for policy (e.g., [19,20]), while for pure-scientific purposes, an endemic flora is usually defined on a biogeographical basis [11,21]. In both cases, richness of endemic taxa in a region is one of the fundamental features of biodiversity and is valuable in the context of nature conservation policies [22]. Assessing the conservation status and the need for management actions of endemic plants is therefore of utmost importance while allocating limited financial resources [11,19,23].

Tyrrhenian continental islands in the central-western Mediterranean (Corsica, Sardinia, Balearic, Tuscan Archipelago, and Sicily) constitute one macro-hotspot of plant diversity within the Mediterranean mega-hotspot [23]. They are recognised as glacial refugia [24] and are both a reservoir of genetic diversity for widespread Mediterranean plants [25,26] and a centre of conservation and differentiation of endemism [8,27]. Sardinia is considered a meso-hotspot within the Tyrrhenian Islands macro-hotspot of biodiversity [23], with rates of endemism ranging between 13% and 15% of the local flora [12,23,28]. For its palaeogeography, current high geological and geomorphological diversity, and degree of isolation, the island supports several ancient or relict (i.e., palaeo-endemics) and recently differentiated endemic plants (i.e., neoendemics) [19,29,30]. The reported numbers of the vascular plants endemic to Sardinia vary according to the reference spatial extent and recent discoveries or taxonomic reviews. Considering only data reported during the current century, 347 taxa (including hybrids and varieties) were included in the checklist by Bacchetta et al. [31] as endemics to Sardinia and shared with the Tyrrhenian Islands. The exclusive component of the island was assessed by Bacchetta et al. [19] at 168 taxa, 139 of which were species, 23 subspecies, four varieties, and two hybrids. These numbers slightly increased to 171 exclusive taxa according to more recent updates in Cañadas et al. [23] and Fenu et al. [29]. With a different approach, related to the political boundaries, Peruzzi et al. [20] recorded 180 ‘strict regional endemic’ and 322 ‘Italian endemic’ vascular plants for Sardinia.

Sardinia hosts around 25% of the 932 taxa native to Italy that were assigned to a risk category, mostly due to human disturbance [32,33]; of these taxa, 99 are endemic to the island. However, other studies accounted for further specific demographic, ecological, and environmental causes of extinction risks such as in the case of the endemic taxa belonging to the genera *Anchusa* [16,34], *Astragalus* [35], and *Centaurea* [36,37] or in the case of specific environments such as wet habitats [38], pastures [39], coastal sand dunes [40,41], and small satellite islets [42,43]. Of the 21 vascular plants currently known in Sardinia and listed in Annex II of the Habitats Directive (43/92/EEC), 17 are endemic [44].

Furthermore, five exclusive endemics (*Aquilegia barbaricina* Arrigoni & E.Nardi, *A. nurgica* Arrigoni & E.Nardi, *Lamyropsis microcephala* (Moris) Dittrich & Greuter, *Polygala sinisica* Arrigoni, and *Ribes sardoum*) were included by the IUCN/SSC–Mediterranean Plant Specialist Group in the ‘Top 50 Mediterranean Island Plants’ to be urgently conserved [45].

In this study, we present a checklist of vascular plant taxa endemic to Sardinia. Starting from the literature and unpublished knowledge by several field surveys and suggestions of the authors and external experts, a dynamic checklist was critically defined and discussed. The main aims of this study were: (1) to present and discuss an updated critical checklist of the vascular plants endemic to Sardinia; (2) to interpret their biogeography and distribution patterns; (3) to summarize their currently known conservation status; and (4) to highlight and discuss gaps and future directions for their knowledge and conservation improvement.

2. Results

The checklist of vascular plants endemic to Sardinia includes 341 taxa, of which 270 are *includenda* and 71 *inquirenda* (see ‘Criteria for the selection of endemic taxa’ in the Materials and Methods section); a further 16 taxa have been excluded (i.e., taxa *excludenda*). The 341 endemic taxa, representing around 15% of the native Sardinian vascular flora, are referred to as 53 families, representing 42% of the 125 families of the native Sardinian flora. There are some similarities between the dominant endemic and native families in Sardinia: in both cases, the most represented family is Asteraceae, with 248 native and 49 endemic taxa. Plumbaginaceae is one of the most important exceptions, being the second largest family in endemic taxa, with 75% of native taxa being endemic. On the other hand, Poaceae, which is the third most representative family in the total native flora (211 taxa), is only the ninth family in endemics, with just 12 taxa, equal to 6% of total native Poaceae of Sardinia (Table 1).

Table 1. Number of endemic vascular taxa (and their relative percentage of the total taxa of the native flora) of the ten richest families in endemic species. The two most species-rich endemic genera and their respective number of doubtful taxa (i.e., *inquirenda*) are also reported for each family.

Family	No. Taxa	No. <i>inquirenda</i>	Most Representative Genera (No. Taxa)
Asteraceae	49 (20%)	19	<i>Hieracium</i> (7), <i>Taraxacum</i> (6)
Plumbaginaceae	42 (75%)	12	<i>Limonium</i> (38), <i>Armeria</i> (4)
Fabaceae	27 (12%)	0	<i>Genista</i> (18), <i>Astragalus</i> (7)
Caryophyllaceae	26 (21%)	1	<i>Silene</i> (9), <i>Dianthus</i> (9)
Lamiaceae	16 (22%)	3	<i>Stachys</i> (3), <i>Micromeria</i> (2), <i>Mentha</i> (2), <i>Teucrium</i> (2)
Boraginaceae	13 (28%)	2	<i>Anchusa</i> (7), <i>Borago</i> (2)
Orchidaceae	13 (20%)	4	<i>Ophrys</i> (9), <i>Orchis</i> (2), <i>Serapias</i> (2)
Apiaceae	12 (13%)	2	<i>Seseli</i> (2), <i>Siler</i> (2)
Poaceae	12 (6%)	2	<i>Sesleria</i> (3), <i>Festuca</i> (2), <i>Trisetaria</i> (2)
Ranunculaceae	12 (19%)	1	<i>Ranunculus</i> (5), <i>Aquilegia</i> (4)

The life form analysis highlighted a clear predominance of hemicryptophytes (118 taxa) and chamaephytes (106), followed by geophytes (56), phanerophytes (29 nano-phanerophytes + six phanerophytes), and therophytes (26). The majority of taxa are endemic exclusively to Sardinia (195 taxa); a further 81 taxa are endemic to Sardinia and Corsica, together accounting for 81% of the total endemic vascular flora (Figure 1).

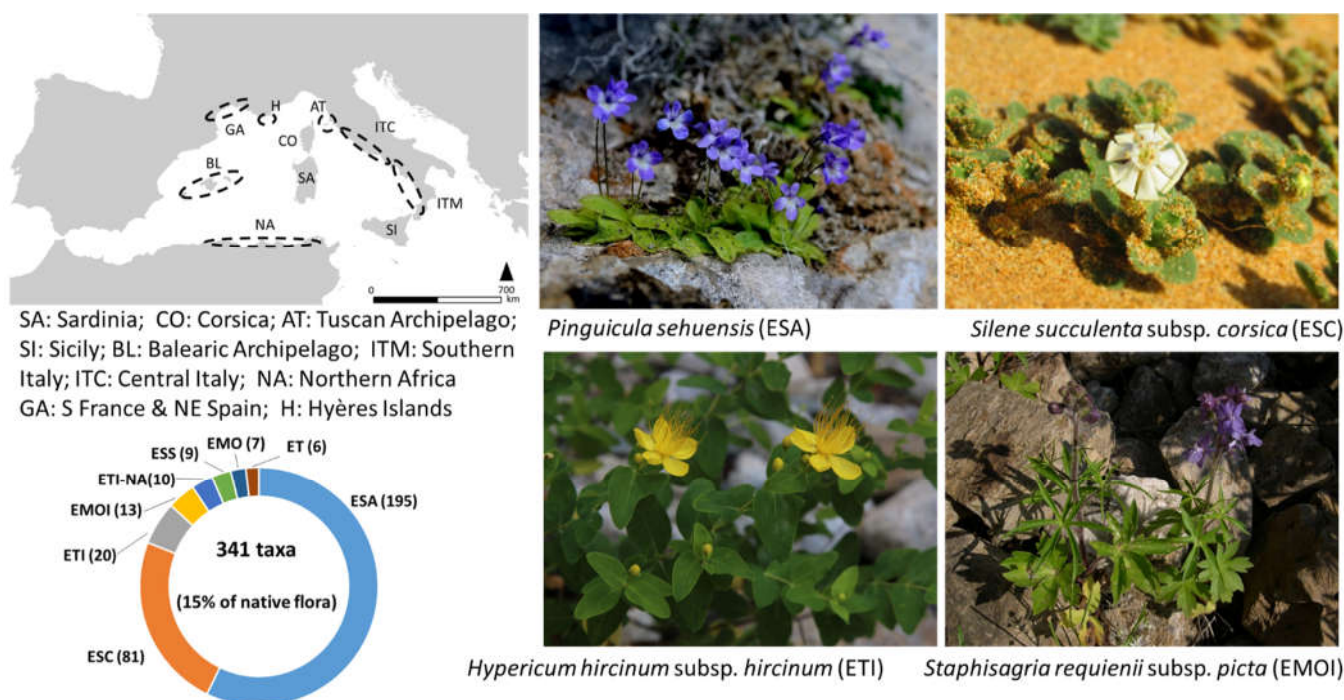


Figure 1. Chorological spectrum of the Sardinian endemic flora. On the right, taxa representative of the four main chorological categories: ESA (SA), ESC (SA + CO), ETI (SA ± CO + AT and/or SI), EMOI (SA ± CO ± AT + BL and/or H), ESS (SA + SI), ETI-NA (ETI + NA), ET (SA + ITM or ITC), EMO (SA + CO and/or GA, ITM, ITC).

Our dataset included the global assessment of the extinction risk for 201 taxa, 81% of which are exclusive to Sardinia. The remaining 140 endemic taxa were assessed as 'Data Deficient' (DD; 14 taxa) or 'Not (yet) Evaluated' (NE; 126 taxa); 59% of *inquirenda* fell under these two last categories. A total of 90 taxa (equal to 26% of the total vascular endemic flora) were of minor or 'Least Concern' (LC). The downside is that 21% of the 341 endemics were Vulnerable (VU, 16 taxa), Endangered (EN, 31 taxa), or Critically Endangered (CR, 25 taxa). Among the most common families, Plumbaginaceae were generally less threatened than average (64% of them are LC), while worthy of special attention are likely the Boraginaceae (38% of them under EN or CR categories), Fabaceae (29% of them under EN or CR categories), and Ranunculaceae, with 23% of endemic taxa CR and 50% not yet evaluated (NE). Apiaceae (66%), Lamiaceae (62%), and Orchidaceae (61%) were the families with the highest percentages of taxa under the DD and NE categories (Figure 2).

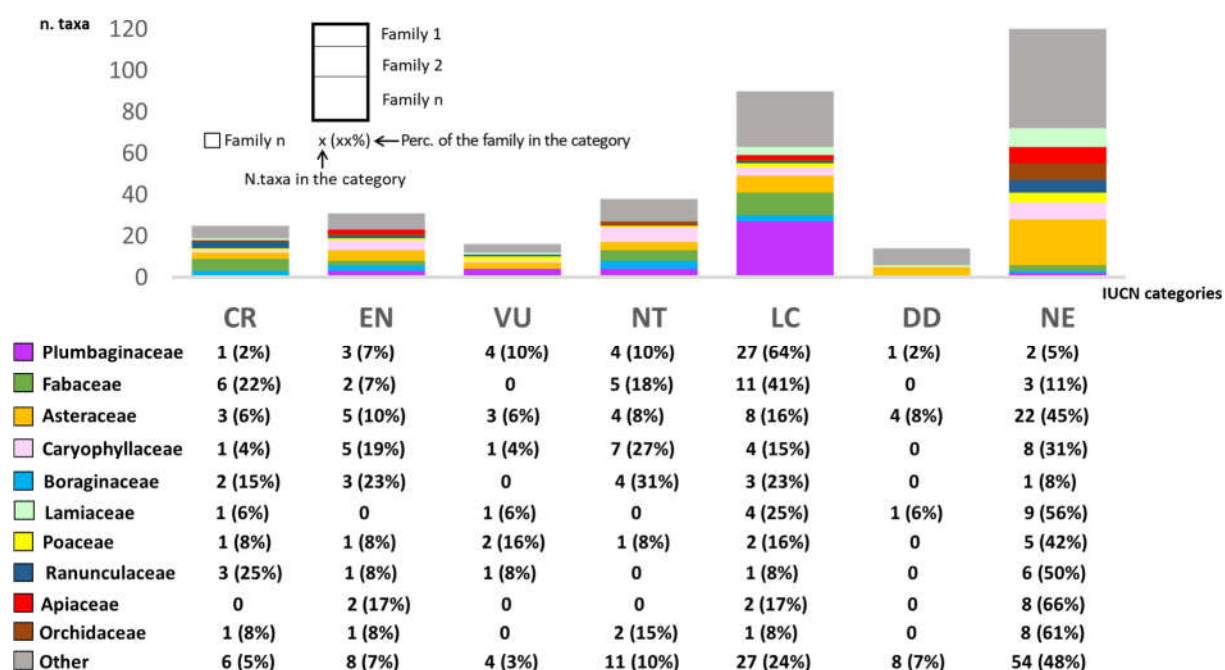


Figure 2. Numbers of vascular plant taxa distributed in the IUCN Red List categories by family. Only the most numerous families in each category were plotted. CR: Critically Endangered, EN: Endangered, VU: Vulnerable, NT: Near Threatened, LC: Least Concern, DD: Data Deficient, NE: Not Evaluated.

3. Discussion

The flora of Sardinia has been the subject of botanical studies for more than 250 years, starting from the first flora published by Allioni [46] to those of Moris [47], Barbey [48], Martelli [49,50], Terracciano [51–53], and up to the recent contribution of Arrigoni [54]. In contrast to whole flora, the endemic contingent received relatively recent specific attention, with a first attempt to achieve a comprehensive survey and synthesis less than 50 years ago [9]. After several proposals for a modern synthesis of the Sardinian endemic vascular flora [11,19,31], this research updates the 30-year-old list of Sardinian endemic vascular plants [9], incorporating recent findings, new taxa descriptions, and considering recent taxonomic revisions. Including all taxa shared with other Tyrrhenian Islands and limited portions of palaeogeographically affine continental territories, it represents the first synthesis of the entire Sardinian endemic component. Another relatively uncommon approach is to present a ‘dynamic’ checklist, which is conceived to be constantly under review and in progress. All the taxa listed here, but especially those included under doubtful status (i.e., *inquirenda*), are therefore taxa that will most likely be amended and adapted in the future in light of the expected scientific advances and discoveries. This approach has already been adopted for other recent floras (e.g., [55,56]) to broaden the debate and highlight the need for further research in even such relatively studied territories. For instance, as elsewhere in the world [57], most taxa, even several *includenda*, have been described on the basis of morphological characteristics and then never confirmed by molecular evidence. Many *inquirenda* are those cryptic and doubtful taxa belonging to the genera *Limonium*, *Ophrys*, and several Asteraceae, especially those from the *Cichorieae* tribe such as the ones of the genera *Hieracium* and *Taraxacum*. All these groups have already been outlined as problematic due to their phylogenetic complexity and instability (e.g., [58–60]). In particular, the above-mentioned *Limonium*, *Hieracium*, and *Taraxacum* as well as *Rubus* are genera in which apomictic reproduction is common (e.g., [58,61]).

3.1. Quantitative Features

Overall, our checklist accounts for 341 *inclusenda* and *inquirenda*, which represent around 15% of the Sardinian vascular native flora known to date (ca. 2300 taxa). A further 16 taxa were retained in a second list of *excludenda* due to the absence of recent evidence of their presence in Sardinia or taxonomic validity. However, we left a trace of their mention within the Sardinian endemic component in order to encourage possible future investigation and re-evaluation. Even though numerical comparisons with other islands are difficult, for the above-mentioned subjectivity in the definition of the endemic component, the high phytogeographic interest of the Sardinian flora was confirmed here, although geographical biases in species discovery and descriptions have been often found (e.g., [62]) and should always be considered when discussing quantitative features of species checklists. Our results are in accordance with those recently published by Thompson [12] and Médail [28], who reported similar percentages of endemic vascular plants in Sardinia. Furthermore, it is noteworthy that the percentages of endemic vascular plants exhibited by Sardinia were similar or even slightly higher than those of the other Mediterranean large islands (see summary presented in Médail [63]), and comparable to those shown by some tropical continental islands such as the large island of Hainan, which has a size similar to Sardinia (33,210 km² [64]), or many small oceanic islands of Eastern Polynesia [65]. All of these comparative data sustain the inclusion of Sardinia and the other Tyrrhenian Islands within the “hottest” global hotspots of plant diversity, as already underlined by several authors [12,23,28,63,66,67].

3.2. Taxonomical Analysis

As in other island floras of the western Mediterranean, Asteraceae is the most represented family with 29 of the 49 endemic taxa (14% of the Sardinian endemic flora) exclusive to Sardinia. This family accounts for 25% of the Corsican endemic flora, 22% in that of Sicily, and 13% in the endemic flora of the Balearic Islands [68–70]. The other families (Plumbaginaceae, Fabaceae, and Caryophyllaceae), which are dominant in the Sardinian endemic flora, are also well represented in most of the other western Mediterranean islands. Within the Asteraceae, apart from the absence in Corsica of the well represented and still diversifying genus *Centaurea*, as already underlined by other authors [8], it is worth mentioning the fact that amongst the Cichorioideae, in Sardinia, there are some shrubby taxa (notably *Plagius flosculosus* (L.) Alavi & Heywood and *Bupthalmum inuloides* Moris), whereas woody Cichorioideae seem absent from other Mediterranean islands and are otherwise well represented in Macaronesia [71].

The preponderance of species belonging to the family Plumbaginaceae is mainly due to 38 taxa (34 of them exclusive to Sardinia) of the genus *Limonium* [58], which has a centre of diversification in the Mediterranean Basin (around 90% of European taxa are concentrated here). This genus comprises sexual and apomictic perennial herbs and sub-shrubs referring to the complex of species that evolved in the proto-Mediterranean area from some diploid species living on inner rocks or sea cliffs during the Oligocene and subsequently extensively diversified during the Messinian salinity crisis and Plio-Pleistocene sea-level fluctuations [72,73]. Regarding this family, it should be noted that *Armeria*, the second genus with endemic taxa (all of them exclusive to Sardinia), is present in all large western Mediterranean islands, but not in the Balearic Archipelago.

Regarding the third largest family of the Sardinian endemic flora, Fabaceae, which is underrepresented in the Corsican endemic flora [70], the Tyrrhenian Islands represent a speciation centre for many plant groups associated with Tertiary floras such as the *Genista ephedroides* DC. and *G. salzmannii* DC. groups [74,75]. This explains the presence of 16 *Genista* taxa exclusive to Sardinia.

The same is true for some genera of the fourth family, Caryophyllaceae, being that Sardinia is also a centre of diversification of the *Dianthus sylvestris* Wulfen group, nine taxa of which are exclusive to the island. The taxa belonging to this group mainly occur in

rupestrian habitats, on rocky and sandy grasslands, garigues, and mesic meadows; several of them are affined to Sicilian endemic *Dianthus* taxa [76]. Even though the evolutionary processes within the group are still debated [77], these were also probably forced by the Messinian salinity crisis and by their characteristic inbreeding depression syndrome and unusual summer-flowering phenology [78,79]. Similar hypotheses were made for some of the rest of Caryophyllaceae such as taxa belonging to the *Silene mollissima* Pers. aggregate [80,81].

Worthy of mention is also the high endemism rate among the Boraginaceae family, especially due to the genus *Anchusa*, a moderate-sized genus with six of the seven allopatric endemic taxa—out of a total of about 30 taxa of the entire genus—exclusive to coastal or mountain habitats of Sardinia and with a probable common genetic pool of tertiary origin [5,16,82,83]. The high number of endemic taxa belonging to the family Boraginaceae is, especially if considering the genus *Anchusa*, exceptional with respect to the other western Mediterranean insular territories and comparable only to the number of endemic *Echium* in the Canarian Archipelago, with which Sardinia shares a Boraginaceae ancestor of Anatolian origin [5].

Although Sardinia does not host any endemic family, unlike many large oceanic and continental tropical islands (for example, Madagascar alone includes five endemic families and 321 endemic genera, see Callmander et al. [84]), the biogeographical originality of the Sardinian flora is underlined by the presence of three exclusive genera (*Castroviejoa*, *Morisia*, and *Nananthea*) and one subgenus (*Buglossites*, within the genus *Borago*), all shared with neighbouring Corsica: this sharing reinforces the vision of a unique Cyrno-Sardinian biogeographical province including the Tuscan Archipelago [19,29], where the subgenus *Buglossites* is also present [82]. The original character of the Sardinian endemic flora, compared to that of Corsica and the other large western Mediterranean islands and mainland territories, is emphasised by some very geographically and/or taxonomically isolated species, survived (or differentiated) only in Sardinia, such as *Lamyropsis microcephala* [85] and *Ribes sardoum* [86].

Few coastal endemics, mainly in the archipelagos of La Maddalena and Tavolara, are exclusive to the offshore satellite islands [87,88]. Most of them are instead shared with the coastal areas of the main Sardinian island, which were connected during the last Plio-Pleistocene eustatic fluctuations. However, these islands and islets, mostly uninhabited, act as modern refugia from the human and herbivory-related pressures [42].

3.3. Life Forms

Considering Raunkiaer's life forms, the endemic flora is quite different from the whole Sardinian flora, with therophytes the dominant biological type in the whole flora but the less represented in the endemic (only 31% of endemic therophytes are exclusive to Sardinia). The low incidence of endemic therophytes is influenced by their very effective dispersal strategies [89]. Moreover, therophytes are less common in highly selective habitats and at higher elevations, where endemic taxa are most frequent [90]. As in the endemic flora of Corsica [70], hemicryptophytes are the dominant biological type among endemics, with 61% of them exclusive to Sardinia. The ratio between chamaephytes and hemicryptophytes is almost equal to one in Sardinia, while in Corsica, hemicryptophytes prevail considerably. This difference between Sardinian and Corsican components could be conditioned by different present and past climatic conditions. For both islands, high percentages of chamaephytes and hemicryptophytes confirm the crucial role of the ecological insularity of mountain massifs for the differentiation of the endemic flora [19,23,30]. In particular, the antiquity of Sardinian mountains and the high incidence of limestone cliffs have promoted the persistence of relict palaeoendemic taxa as well as more recent allopatric evolutionary processes that have given rise to many specialised chasmophytes (e.g., [88,91–93]). Chamaephytic and hemicryptophytic forms are also particularly adapted to the severe wind, salt spray, and aridity that are typical of coastal environments (e.g., [94–96]) around the about 1900 km of coastline, characterised by a

variety of landforms such as cliffs, sandy dunes, long and pocket beaches, and by ca. 400 offshore satellite islands and small islets [42,43,97], also considered as important local centres of endemism (i.e., micro- and nano-hotspots *sensu* Fenu et al. [98], Cañadas et al. [23]).

Interestingly, Sardinia has more than 10% of phanerophytes (nano-phanerophytes included) in the endemic flora (whereas Corsica has less than 5%), with 35 taxa belonging to genera *Hypericum*, *Quercus*, *Rhamnus*, *Ribes*, *Rubus*, *Salix*, and especially *Genista* (18 endemic taxa, Bacchetta et al. [74,75]). Higher levels of endemic phanerophytes than Sardinian endemic flora are in Sicily, the Balearic Archipelago and Cyprus, while lower percentages characterise the floras of Corsica, Greece, southern Spain, and the Alps [68,70].

Spiny plants are also over-represented among Sardinian endemics with respect to the native flora. Other forms of adaptation to millennia of grazing/browsing pressures such as the geophytic life form, the facilitative mechanisms among plants, or their toxicity are also common (e.g., [99–101]), especially in the most represented families such as Asteraceae, Fabaceae, Lamiaceae, and Orchidaceae.

3.4. Chorological Types

The largest portion of the endemic flora is composed of exclusive taxa (SA; 57%), which, together with the taxa shared with Corsica (SA-CO; 24%), represent ca. 81% of all endemics. The exclusive Sardinian taxa amount to 8.4% of the total Sardinian flora. Compared with other islands, this percentage of exclusive taxa is lower than in Sicily (10%, Brullo et al. [68]), but higher than in Corsica (5.5%, Jeanmonod et al. [70]). The high percentage of SA and SA-CO taxa provides further evidence for the floristic autonomy of the Cyrno-Sardinian flora, mainly due to its geographical and ecological isolation that favours the *in situ* speciation of several taxa [4,66,70]. Interestingly, Sardinia has more exclusive endemic plants than Corsica (57% Sardinia vs. 43% Corsica), whereas Corsica has many more endemic species shared with the mainland (17.7% Corsica vs. 2.6% Sardinia) [70]. The latter difference suggests that, even if the two islands share a common floristic ancestry SA-CO taxa, accounting for 24% and 26% of the Sardinian and Corsican endemic flora, respectively, local differentiation of genetic lineages and isolation of narrow endemic species acted more in Sardinia than in Corsica. This might be because Corsica maintained more contact with continental land masses, is smaller in extension, and less surrounded by deep sea bottoms than Sardinia, which has therefore experienced longer and more repeated periods of biogeographical isolation.

Around 5% (16 taxa) of the Sardinian vascular endemic flora is composed of less common taxa shared with the Tuscan Archipelago, which constituted the land-bridge connecting the Italian Peninsula to Corsica and Sardinia during the Plio-Pleistocene eustatic fluctuations [102,103]. Within the Tuscan Archipelago, the island of Capraia (the closest to Corsica) is the one that mainly shares the Hercynian intrusive substrates—and calcifuge taxa linked to them—with Sardinia and Corsica [104]. These conditions are common in several Sardinian crystalline massifs such as Gennargentu [105], Sette Fratelli [106], or Limbara [107]. Taken together, these taxa represent the overwhelming majority of endemic vascular taxa and support the biogeographic scheme that characterises the independent Cyrno-Sardinian and Tuscan Archipelago province, already reported on the basis of faunistic and floristic approaches (e.g., [19,29,108–111]).

The remaining few—but not less interesting—endemics are those shared with the Balearic Archipelago and other Hercynian linked areas (i.e., continental and small islands in present-day Provence) or eastern and southern insular and continental territories including Sicily, the Calabrian arc in southern Italy, and the northern African regions of Kabylia and Kroumirie. These are mainly palaeoendemic relics of the pre-Oligocene connection [4,112,113], as seems to be the case for *Thymus herba-barona* Loisel. [6], *Soleirolia soleirolii* (Req.) Dandy [114] and *Arenaria balearica* L. [115], which often followed a well-documented east-to-west colonisation route (from the Irano-Turanian to the Anato-

lian plate and then to the Mediterranean), as in the cases of the ancestors of the *Lamyropsis* [85], *Arum*, *Biarum*, and *Helicodiceros* [4] genera. Other typical examples are explained by the Messinian model, when sea regressions opened lands suitable for plant colonisation and set connections among several territories, currently separated by the Mediterranean Sea [116,117].

3.5. Conservation Status of the Endemic Sardinian Flora

With regard to the conservation status of the endemic vascular flora, we can look at the glass as either half full or half empty. On one hand, an important percentage of endemics (26%) are under the IUCN Least Concern (LC) category. Some of them such as *Arum pictum* L.f. subsp. *pictum* or *Vinca difformis* Pourr. subsp. *sardoa* Stearn are neither rare nor threatened. Others such as *Armeria sulcitana* Arrigoni or *Ferula arrigonii* Bocchieri, although limited to a few territories, show intrinsic and extrinsic characteristics that allow them to be particularly resistant and/or resilient to pressures or to be adapted to live in remote habitats, often poor in competitors. On the other hand, 16% of the 341 endemics are either Endangered (EN) or Critically Endangered (CR). These taxa were found in decline, both in coastal and mountain areas, mainly due to human-induced habitat fragmentation and loss (e.g., [40,41,118]). Other reasons might be related to their intrinsic low genetic diversity, narrow ecological niches or population viability, which lead them to being less prone to adapt to any environmental stress and/or competition (e.g., [17,34,119–121]). Accordingly, several ex situ and in situ activities have been especially undertaken for those taxa currently assessed as the most endangered (e.g., [44,86,122–124]).

Several taxa have still not been assessed. The fact that most of them are *inquirenda* and/or having transnational distribution is not surprising. First, this suggests that pro-paedeutic taxonomical studies are needed to uncover the missing information about their conservation status. Genetic and phylogenetic studies have been underutilised for the establishment of priorities for conservation in most of the Mediterranean region [125]; delineating evolutionary entities, which must be those that will be subject to both ex situ and in situ conservation [126], is another crucial step towards better conservation of Sardinian flora. Second, further and larger collaborations among experts from different countries are necessary to define the global conservation status of several unassessed taxa. In consideration of the important level of regional responsibility [127] of the Sardinian community, due to the high rate of endemic vascular plants and the number of rare and/or threatened taxa [11], filling these important gaps is crucial to better address upcoming efforts in conservation planning and policy.

4. Materials and Methods

4.1. Study Area

Sardinia and its ca. 400 satellite minor islands, with a total surface area of 24,090 km², is the second largest Mediterranean island after the other Italian island of Sicily. The Sardinian landscape is dominated by hilly lands, plateaus, and plains with several isolated groups of low mountains or massifs, the highest of which is the Gennargentu, with a maximum elevation of 1834 m a.s.l. The heterogeneity of substrata is mainly evidenced by Palaeozoic limestones, metamorphites and batholiths, a sedimentary lithostratigraphic complex related to a Mesozoic marine transgression, Tertiary marine and volcanic depositions related to the opening of the Tyrrhenian Basin, and Quaternary alluvial deposits [128].

Two macrobioclimates (Mediterranean and Temperate subMediterranean), four classes of continentality (from weak semihyperoceanic to weak subcontinental), eight thermotypic horizons (from lower thermoMediterranean to upper supraterperate) and seven ombrothermic horizons (from lower dry to lower hyperhumid) were identified for the entire region [129–131].

Six biogeographical sectors were defined based on the distribution of the endemic plants in relation to the local geology and geomorphology [29] and according to the highly diversified vegetation with 23 dynamic series (21 exclusive of Sardinia, two shared with Corsica) and five geoseries (two exclusive of Sardinia and one shared with Corsica) [130]. These sectors were hierarchically arranged within the Sardinian subprovince, the Cyrno-Sardinian and Tuscan Archipelago province, and the Italo-Tyrrhenian super-province, which extends over the western coast of the Italian Peninsula from Liguria to Calabria [19,29]. The island possesses highly polymorphic genera that, favoured by isolation and environmental heterogeneity, are currently or recently playing key roles in the evolutionary processes of differentiation and the resulting gradual speciation of several endemic lineages such as the so-called neoenemics belonging to the genera *Limonium* [57], *Centaurea* [88], *Portulaca* [132], or *Aquilegia* [119], among others.

4.2. Origin and Evolution of the Endemic Component of the Sardinian Flora

The endemic plant composition—similar to most of the native flora—is shaped by the complex geologic and climatic history of western Mediterranean Basin, which has been synthesised in three main events (Figure 3).

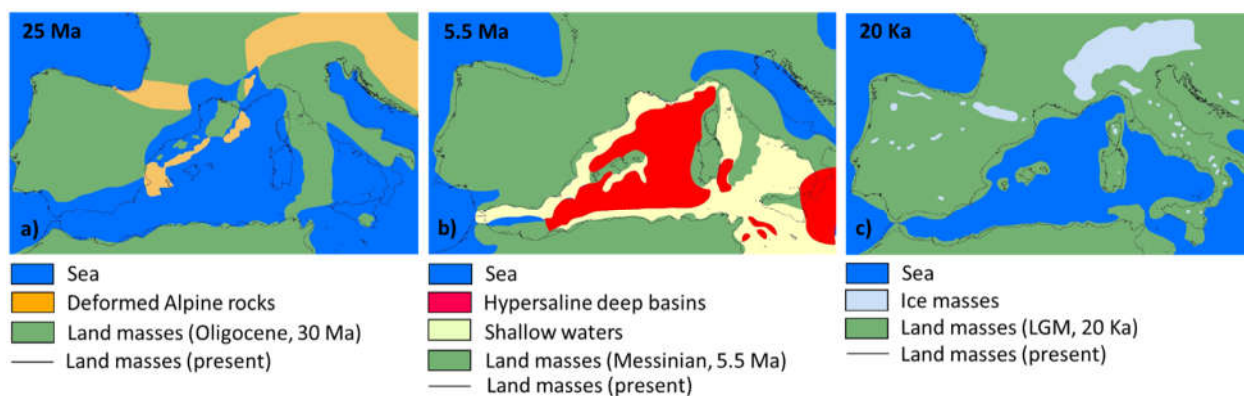


Figure 3. Palaeogeographical maps of the western Mediterranean Basin during the three main episodes that explain the current patterns of Sardinian plant distribution and their biogeographical links: (a) the backward migration of the ‘Hercynian islands’ during the Oligocene (ca. 30–15 Ma), redrawn after [4,133]; (b) the Messinian salinity crisis due to the closure of the Mediterranean–Atlantic gateways during the Late Miocene (ca. 6–5 Ma), redrawn after [28,134]; and (c) the climatic and eustatic changes of the Pleistocene, occurred from Early Pliocene (ca. 5 Ma) until the Last Glacial Maximum (LGM, ca. 20,000 years ago), redrawn after [102,103].

The oldest is the mid-Tertiary fragmentation and rotation of the eastern Balearic Archipelago, Corsica, Sardinia, interior Calabrian arch, and Peloritian Massif of north-eastern part of Sicily from the current southern France and north-eastern Spain or the so-called “Protoligurian massif” [133]. The distribution of several Tyrrhenian endemic plants shared between these islands reflects this palaeogeographical event. Some examples are *Arenaria balearica* [115], *Arum pictum*, *Helicodiceros muscivorus* (L.f.) Engl. [4], *Soleirolia soleirolii*, and *Teucrium marum* L. [28,109], or the ancestors to the vicariant species belonging to genera such as *Cymbalaria* or *Thymus* [6,7]. The Messinian salinity crisis of the Late Miocene is another biogeographical event caused by the closure of the Mediterranean–Atlantic connection. This event induced an almost complete desiccation of the Mediterranean Sea and the formation of land bridges that connected, for the last time, the Cyrno-Sardinian system to the Apulian plate and the African continent [116,135,136]. During this period, some opportunities of dispersal-vicariance events and species radiations existed for drought-resistant plant species belonging to xerophytic and halophytic communities. Among the Sardinian taxa that currently show such disjunct or vicariant distributions are those of the *Cephalaria squamiflora* (Sieber) Greuter group and the

Erodium subg. *Barbata* [117,137]. Furthermore, at the end of the Messinian salinity crisis, the relatively fast re-filling of the Mediterranean Basin caused the isolation of previously well connected plant populations that underwent a typical process of allopatric speciation, often originating groups of morphologically similar, geographically vicariant endemic species (schizoendemics): a well-known model is that of the *Silene mollissima* aggregate, which comprises 10 to 12 narrow endemic species [81,116] including the Sardinian *Silene ichnusae* and the Cyrno-Sardinian *Silene velutina* Pourr. ex Loisel. [121]. Finally, climatic and eustatic changes during the late Pliocene and Early-Middle Pleistocene also profoundly affected the biogeographical footprint of several Mediterranean lineages and plant assemblages, allowing for the possible terrestrial migration of a more competitive cool-temperate flora onto some offshore islands that served as glacial refugia, *sensu* Médail and Diadema [24]. The current distribution pattern of most of the endemic plants that are shared within the Cyrno-Sardinian and Tuscan Archipelago province such as *Borago pygmaea* (DC.) Chater & Greuter, *Carex microcarpa* Bertol. ex Moris, or *Pancratium illyricum* L. [5,82,138,139], was influenced by this event. Such as in the well-documented case of deciduous *Quercus* [140–142], island glacial refugia favoured the differentiation of genetic lineages of several plant groups. Some of them spread throughout the continents after the glacial ages, whereas others remained confined to the islands, giving rise to endemic taxa.

4.3. Criteria for the Selection of Endemic Taxa

The main criterion to discriminate endemic from non-endemic taxa was based on the biogeographical approach proposed by Médail and Quézel [66], which identified the high rate of plant endemism of the Tyrrhenian Islands macro-hotspot as a result of a series of shared palaeogeographical events. That is, we considered a taxon as a Sardinian endemic when its distribution was confined to Sardinia or to Sardinia and at least another Tyrrhenian Island. Some taxa also present in limited neighbouring and palaeogeographically related continental territories were also included.

The initial checklist was obtained from the literature on the hitherto known flora of Sardinia [9,19,31,54] and neighbouring territories—mainly islands—whose endemic flora is partially shared with Sardinia (e.g., [143–147]) and integrated according to more recent specific publications, mainly focused on the taxonomic description, revision, and distribution of endemic taxa (e.g., [7,75,107,148]). Online databases such as Euro + Med Plantbase [149], Plants of the World Online [150] or the Italian FlorItaly [151], the Spanish ANTHOS [152] or the French Inventaire National du Patrimoine Naturel—INPN [153] were also consulted. We focused only on species and subspecies levels, which were nomenclaturally updated according to Bartolucci et al. [154], and critically reviewed by the authors and acknowledged external Mediterranean experts. Distribution data were mostly gleaned from the collections compiled in the second half of the 19th century, housed at CAG, CAT, FI, NAP, PAL, SASSA, SS, TO, and CJB herbaria. Further relevant distribution data as well as the Raunkiaer's life form of each taxon were obtained from the above-mentioned literature and integrated by the experts' unpublished knowledge. Chorological categories of the considered taxa were then defined according to their currently known distribution, following the scheme reported in Bacchetta and Pontecorvo [13] and updated in successive floras [98,105,155,156].

Since the taxonomy of several taxa is still debated and/or their presence in the island is not always sure or recently confirmed, taxa were included in the final checklist as *includenda* (i.e., currently taxonomically valid taxa, undoubtedly present in Sardinia), *inquirenda* (i.e., taxa of taxonomically doubtful validity and/or whose presence in Sardinia is in need of further investigations), or *excludenda* (i.e., currently taxonomically invalid taxa and/or whose presence in Sardinia was reported at only one time but not recognised by further research and/or never confirmed in the field in the last 50 years). Finally, all the global conservation statuses of the *includenda* and *inquirenda* taxa were retrieved from

the available literature (e.g., [32]) or the IUCN database [157]. All of the mentioned information is reported for each taxon in the Supplementary Materials (Tables S1 and S2).

5. Conclusions

This checklist confirms the phylogeographic and conservation interest of the endemic vascular flora of Sardinia. It is the result of a thorough survey of regional literature, web platforms, unpublished data, and expert opinions from the authors and other external acknowledged experts. The current state-of-the-art was resumed. Nonetheless, as almost all floras, this one is also a work in progress, which must be constantly and dynamically updated. For instance, endemic species not yet known to science can be discovered in remote places, and cryptic taxa can be hidden under the disguise of morphological similarity and will be detectable with molecular methods. These knowledge gaps need to be prioritised in the agendas of research and funding institution. Our dynamic approach illustrates converging, but also debatable perceptions and points of view, to enable more critical assessments and to emphasise the need of basic and advanced research on botany in Sardinia. Further efforts in conservation planning and policy might complete the optimistic aim of preserving this irreplaceable heritage for future generations. In this sense, we underline once again the lack of a regional law for the protection of the Sardinian flora (e.g., [19,158]), and the need of a more updated and inclusive international legal framework [159–162].

Supplementary Materials: The following supporting information can be downloaded at: www.mdpi.com/article/10.3390/plants11050601/s1, Table S1: List of taxa *includenda* and *inquirenda* with the following information: (1) Dominant biological form, (2) Distribution, (3) Chorological category, (4) Biogeographical unit, and (5) Global IUCN assessment and its sources; Table S2: List of taxa *excludenda* with the following information: (1) Dominant biological form; (2) Distribution (invalidated); (3) Chorological category (invalidated), and (4) Biogeographical unit (invalidated).

Author Contributions: Conceptualisation, M.F., E.F., and G.B.; Methodology, M.F., E.F., G.F., and G.B.; Formal analysis, M.F.; Data curation, M.F., E.F., G.C. (Giacomo Calvia), G.C. (Giuliano Campus), G.F., M.P., G.B.; Writing—original draft preparation, M.F. and E.F.; Writing—review and editing, M.F., E.F., G.C. (Giacomo Calvia), G.C. (Giuliano Campus), G.F., M.P., G.B.; Funding acquisition, E.F. and G.B. All authors have read and agreed to the published version of the manuscript.

Funding: The publication of this research was funded by the University of Sassari (Grant Number: FAR2020) awarded to Emmanuele Farris.

Institutional Review Board Statement: Not applicable.

Informed Consent Statement: Not applicable.

Data Availability Statement: All data used in this research are available in the Supplementary Materials.

Acknowledgments: The authors are grateful to all the staff of the mentioned Herbaria for providing free access to all of the requested material. Special mention should be made of the herbarium staff of the Conservatoire et Jardin Botaniques de la Ville de Genève (CJB), who scanned more than 100 specimens upon our request. We would also like to thank the external experts, Salvatore Brullo, Fabrizio Bartolucci, Angelo Troia, Salvatore Pasta, Juan Rita Larrucea, and Guilhan Paradis for their kind and valuable comments.

Conflicts of Interest: The authors declare no conflict of interest.

References

1. Thompson, J.D. *Plant Evolution in the Mediterranean*; Oxford University Press: Oxford, UK, 2005; pp. 1–304.
2. Favarger, C.; Contandriopoulos, J. Essai sur l'endémisme. *Bull. Soc. Bot. Suisse* **1961**, *77*, 383–408.
3. Contandriopoulos, J.; Favarger, C. Problèmes posés par l'endémisme en Méditerranée. *Colloq. Int. CNRS* **1975**, *235*, 175–194.

4. Mansion, G.; Rosenbaum, G.; Schoenenberger, N.; Bacchetta, G.; Rosselló, J.A.; Conti, E. Phylogenetic analysis informed by geological history supports multiple, sequential invasions of the Mediterranean Basin by the angiosperm family Araceae. *System. Biol.* **2008**, *57*, 269–285, <https://doi.org/10.1080/10635150802044029>.
5. Mansion, G.; Selvi, F.; Guggisberg, A.; Conti, E. Origin of Mediterranean insular endemics in the Boraginales: Integrative evidence from molecular dating and ancestral area reconstruction. *J. Biogeogr.* **2009**, *36*, 1282–1296, <https://doi.org/10.1111/j.1365-2699.2009.02082.x>.
6. Molins, A.; Bacchetta, G.; Rosato, M.; Rosselló, J.A.; Mayol, M. Molecular phylogeography of *Thymus herba-barona* (Lamiaceae): Insight into the evolutionary history of the flora of the western Mediterranean islands. *Taxon* **2011**, *60*, 1295–1305, <https://doi.org/10.1002/tax.605006>.
7. Carnicero, P.; Schönswetter, P.; Garcia-Jacas, N.; Galbany-Casals, M. Is there a need for accepting paraphyletic taxa? A case study in the Sardinian endemic *Cymbalaria muelleri* (Plantaginaceae). *Bot. J. Linn. Soc.* **2019**, *191*, 325–338, <https://doi.org/10.1093/botlinnean/boz052>.
8. López-Alvarado, J.; Mameli, G.; Farris, E.; Susanna, A.; Filigheddu, R.; Garcia-Jacas, N. Islands as a crossroad of evolutionary lineages: A case study of *Centaurea* sect. *Centaurea* (Compositae) from Sardinia (Mediterranean Basin). *PLoS ONE* **2020**, *15*, e0228776, <https://doi.org/10.1371/journal.pone.0228776>.
9. Arrigoni, P.V.; Camarda, I.; Corrias, B.; Diana Corrias, S.; Nardi, E.; Raffaelli, M.; Valsecchi, F. Le piante endemiche della Sardegna. *Boll. Soc. Sarda. Sci. Nat.* **1976–1992**, *1–202*, 1–1050.
10. Arrigoni, P.V. Le piante endemiche della Sardegna. Introduzione. *Boll. Soc. Sarda. Sci. Nat.* **1976**, *16*, 259–264.
11. Bacchetta, G.; Farris, E.; Pontecorvo, C. A new method to set conservation priorities in biodiversity hotspots. *Plant Biosyst.* **2012**, *146*, 638–648.
12. Thompson, J.D. *Plant Evolution in the Mediterranean, Insights for Conservation*, 2nd ed. Oxford University Press: Oxford, UK, 2020; pp. 1–352, <https://doi.org/10.1093/oso/9780198835141.001.0001>.
13. Bacchetta, G.; Pontecorvo, C. Contribution to the knowledge of the endemic vascular flora of Iglesiente (SW Sardinia-Italy). *Candollea* **2005**, *60*, 481–501.
14. Nikolić, T.; Antonić, O.; Alegro, A.L.; Dobrović, I.; Bogdanović, S.; Liber, Z.; Rešetnik, I. Plant species diversity of Adriatic islands: An introductory survey. *Plant Biosyst.* **2008**, *142*, 435–445, <https://doi.org/10.1080/11263500802410769>.
15. Jeanmonod, D. Révision de la section *Siphonomorpha* Otth du genre *Silene*, L. en Méditerranée occidentale. II: Le Group Du *Silene mollissima*. *Candollea* **1984**, *39*, 195–259.
16. Bacchetta, G.; Coppi, A.; Pontecorvo, C.; Selvi, F. Systematics, phylogenetic relationships and conservation of the taxa of *Anchusa* (Boraginaceae) endemic to Sardinia (Italy). *Syst. Biodivers.* **2008**, *6*, 161–174, <https://doi.org/10.1017/S1477200008002673>.
17. Gentili, R.; Fenu, G.; Mattana, E.; Citterio, S.; De Mattia, F.; Bacchetta, G. Conservation genetics of two island endemic *Ribes* spp. (Grossulariaceae) of Sardinia: Survival or extinction? *Plant Biol.* **2015**, *17*, 1085–1094, <https://doi.org/10.1111/plb.12330>.
18. Laffan, S.W.; Crisp, M.D. Assessing endemism at multiple spatial scales, with an example from the Australian vascular flora. *J. Biogeogr.* **2003**, *30*, 511–520, <https://doi.org/10.1046/j.1365-2699.2003.00875.x>.
19. Bacchetta, G.; Fenu, G.; Mattana, E. A checklist of the exclusive vascular flora of Sardinia with priority rankings for conservation. *An. Jard. Bot. Madr.* **2012**, *69*, 81–89, <https://doi.org/10.3989/ajbm.2289>.
20. Peruzzi, L.; Conti, F.; Bartolucci, F. An inventory of vascular plants endemic to Italy. *Phytotaxa* **2014**, *168*, 1–75, <https://doi.org/10.11646/phytotaxa.168.1.1>.
21. Farris, E.; Carta, M.; Circosta, S.; Falchi, S.; Papuga, G.; de Lange, P. The indigenous vascular flora of the forest domain of Anela (Sardinia, Italy). *Phytokeys* **2018**, *113*, 97–143, <https://doi.org/10.3897/phytokeys.113.28681>.
22. Hobohm, C. *Endemism in Vascular Plants*; Springer Press: Amsterdam, The Netherlands, 2014; pp. 1–348, <https://doi.org/10.1007/978-94-007-6913-7>.
23. Cañadas, E.M.; Fenu, G.; Peñas, J.; Lorite, J.; Mattana, E.; Bacchetta, G. Hotspots within hotspots: Endemic plant richness, environmental drivers, and implications for conservation. *Biol. Conserv.* **2014**, *170*, 282–291, <https://doi.org/10.1016/j.biocon.2013.12.007>.
24. Médail, F.; Diadema, K. Glacial refugia influence plant diversity patterns in the Mediterranean Basin. *J. Biogeogr.* **2009**, *36*, 1333–1345, <https://doi.org/10.1111/j.1365-2699.2008.02051.x>.
25. Fineschi, S.; Cozzolino, S.; Migliaccio, M.; Musacchio, A.; Innocenti, M.; Vendramin, G.G. Sicily represents the Italian reservoir of chloroplast DNA diversity of *Quercus ilex* L. (Fagaceae). *Ann. For. Sci.* **2005**, *62*, 79–84, <https://doi.org/10.1051/forest:2004085>.
26. Agrimonti, C.; Bianchi, R.; Bianchi, A.; Ballero, M.; Poli, F.; Marmioli, N. Understanding biological conservation strategies: A molecular-genetic approach to the case of myrtle (*Myrtus communis* L.) in two Italian regions: Sardinia and Calabria. *Conserv. Genet.* **2007**, *8*, 385–396, <https://doi.org/10.1007/s10592-006-9177-y>.
27. Fernández-Mazuecos, M.; Jiménez-Mejías, P.; Rotllan-Puig, X.; Vargas, P. Narrow endemics to Mediterranean islands: Moderate genetic diversity but narrow climatic niche of the ancient, critically endangered *Naufraga* (Apiaceae). *Perspect. Plant Ecol. Evol.* **2014**, *16*, 190–202, <https://doi.org/10.1016/j.ppees.2014.05.003>.
28. Médail, F. Plant biogeography and vegetation patterns of the Mediterranean islands. *Bot. Rev.* **2021**, *in press*, <https://doi.org/10.1007/s12229-021-09245-3>.
29. Fenu, G.; Fois, M.; Cañadas, E.M.; Bacchetta, G. Using endemic-plant distribution, geology and geomorphology in biogeography: The case of Sardinia (Mediterranean Basin). *System. Biodivers.* **2014**, *12*, 181–193, <https://doi.org/10.1080/14772000.2014.894592>.

30. Fois, M.; Fenu, G.; Cañadas, E.M.; Bacchetta, G. Disentangling the influence of environmental and anthropogenic factors on the distribution of endemic vascular plants in Sardinia. *PLoS ONE* **2017**, *12*, e0182539, <https://doi.org/10.1371/journal.pone.0182539>.
31. Bacchetta, G.; Iriti, G.; Pontecorvo, C. Contributo alla conoscenza della flora vascolare endemica della Sardegna. *Inform. Bot. Ital.* **2005**, *37*, 306–307.
32. Orsenigo, S.; Montagnani, C.; Fenu, G.; Gargano, D.; Peruzzi, L.; Abeli, T.; Alessandrini, A.; Bacchetta, G.; Bartolucci, F.; Bovio, M.; et al. Red Listing plants under full national responsibility: Extinction risk and threats in the vascular flora endemic to Italy. *Biol. Conserv.* **2018**, *224*, 213–222, <https://doi.org/10.1016/j.biocon.2018.05.030>.
33. Orsenigo, S.; Fenu, G.; Gargano, D.; Montagnani, C.; Abeli, T.; Alessandrini, A.; Bacchetta, G.; Bartolucci, F.; Carta, A.; Castello, M.; et al. Red list of threatened vascular plants in Italy. *Plant Biosyst.* **2021**, *155*, 310–335, <https://doi.org/10.1080/11263504.2020.1739165>.
34. Budroni, M.A.; Farris, E.; Zirulia, A.; Pisanu, S.; Filigheddu, R.; Rustici, M. Evidence for age-structured depensation effect in fragmented plant populations: The case of the Mediterranean endemic *Anchusa sardoa* (Boraginaceae). *Ecol. Complex.* **2014**, *20*, 142–150, <https://doi.org/10.1016/j.ecocom.2014.09.007>.
35. Bacchetta, G.; Fenu, G.; Mattana, E.; Pontecorvo, C. Ecological remarks on *Astragalus maritimus* and *A. verrucosus*, two threatened exclusive endemic species of Sardinia. *Acta Bot. Gall.* **2011**, *158*, 79–91, <https://doi.org/10.1080/12538078.2011.10516256>.
36. Pisanu, S.; Farris, E.; Filigheddu, R.; García, M.B. Demographic effects of large, introduced herbivores on a long-lived endemic plant. *Plant Ecol.* **2012**, *213*, 1543–1553, <https://doi.org/10.1007/s11258-012-0110-9>.
37. Farris, E.; Filigheddu, R.; Mameli, G.; Falanga, V.; Vanetti, I.; Rosati, L.; Binelli, G. Is population genetic structure of vascular plants shaped more by ecological or geographic factors? A study case on the Mediterranean endemic *Centaurea filiformis* (Asteraceae). *Plant Biol.* **2018**, *20*, 936–947, <https://doi.org/10.1111/plb.12853>.
38. Bagella, S.; Caria, M.C.; Farris, E.; Filigheddu, R. Spatial-time variability and conservation relevance of plant communities in Mediterranean temporary wet habitats: A case study in Sardinia (Italy). *Plant Biosyst.* **2009**, *143*, 435–442, <https://doi.org/10.1080/11263500903187068>.
39. Farris, E.; Rosati, L.; Secchi, Z.; Filigheddu, R. Are all pastures eligible for conservation? A phytosociological survey of the Sardinian-Corsican province as a basic tool for the Habitats Directive. *Plant Biosyst.* **2013**, *147*, 931–946, <https://dx.doi.org/10.1080/11263504.2013.778911>.
40. Fenu, G.; Cogoni, D.; Ulian, T.; Bacchetta, G. The impact of human trampling on a threatened coastal Mediterranean plant: The case of *Anchusa littorea* Moris (Boraginaceae). *Flora* **2013**, *208*, 104–110, <https://doi.org/10.1016/j.flora.2013.02.003>.
41. Farris, E.; Pisanu, S.; Ceccherelli, G.; Filigheddu, R. Human trampling effects on Mediterranean coastal dune plants. *Plant Biosyst.* **2013**, *147*, 1043–1051, <https://doi.org/10.1080/11263504.2013.861540>.
42. Fois, M.; Fenu, G.; Bacchetta, G. Global analyses underrate part of the story: Finding applicable results for the conservation planning of small Sardinian islets' flora. *Biodivers. Conserv.* **2016**, *25*, 1091–1106, <https://doi.org/10.1007/s10531-016-1110-1>.
43. Fois, M.; Podda, L.; Médail, F.; Bacchetta, G. Endemic and alien vascular plant diversity in the small Mediterranean islands of Sardinia: Drivers and implications for their conservation. *Biol. Conserv.* **2020**, *244*, 108519, <https://doi.org/10.1016/j.biocon.2020.108519>.
44. Fenu, G.; Fois, M.; Cogoni, D.; Porceddu, M.; Pinna, M.S.; Lombraña, A.C.; Nebot, A.; Sulis, E.; Picciau, R.; Santo, A.; et al. The Aichi Biodiversity Target 12 at regional level: An achievable goal? *Biodiversity* **2015**, *16*, 120–135, <https://doi.org/10.1080/14888386.2015.1062423>.
45. Pasta, S.; Perez-Graber, A.; Fazan, L.; de Montmollin, B. *The Top 50 Mediterranean Island Plants* UPDATE 2017; IUCN/SSC/Mediterranean Plant Specialist Group: Neuchâtel, Switzerland, 2017; pp. 1–141. Available online: <https://top50.iucn-mpsg.org/book> (accessed on 20 April 2021).
46. Allioni, C. Fasciculus stirpium Sardiniae in Diocesi Calari lectarum a M.A. Piazza, Chirurgo taurinensi, quos in usum botanicorum recenset. *C.A. Misc. Phil.-Math. Soc. Priv. Taur.* **1759**, *1*, 88–103.
47. Moris, G.G. *Flora Sardoae*; Ex Regio Typographeo: Taurini, 1837–1859; Volume 1–3.
48. Barbey, W. *Florae Sardoae Compendium*; Georges Bridel Editeur: Lausanne, Switzerland, 1884.
49. Martelli, U. *Monocotyledones Sardoae*; Tip. Niccolai: Firenze, Italy, 1896; Volume 1–2.
50. Martelli, U. *Monocotyledones Sardoae*, 3rd ed.; Casciano, R.S., Ed.; Stab. Tip. Cappelli: Naples, Italy, 1904.
51. Terracciano, A. La Flora Sardoae di M.A. Piazza da Villafranca redatta coi suoi manoscritti. *Mem. R. Acc. Sc. Torino* **1914**, *64*, 1–54.
52. Terracciano, A. La Flora Sardoae di M.A. Piazza da Villafranca redatta coi suoi manoscritti. *Mem. R. Acc. Sc. Torino* **1914**, *65*, 1–53.
53. Terracciano, A. La Flora Sardoae di M.A. Piazza da Villafranca redatta coi suoi manoscritti. *Mem. R. Acc. Sc. Torino* **1930**, *67*, 1–78.
54. Arrigoni, P.V. *Flora dell'Isola di Sardegna* (Flora of the island of Sardinia); Delfino: Sassari, Italy, 2006–2015; Volume 1–6.
55. Viciani, D.; Ferretti, G.; Bernardini, A.; Raffaelli, M.; Lastrucci, L. An annotated checklist of the vascular flora of the Arezzo administrative province (Tuscany, Italy). *Plant Biosyst.* **2020**, *155*, 971–982, <https://doi.org/10.1080/11263504.2020.1810811>.
56. Beierkuhnlein, C.; Walentowitz, A.; Welss, W. FloCan—A Revised Checklist for the Flora of the Canary Islands. *Diversity* **2021**, *13*, 480, <https://doi.org/10.3390/d13100480>.
57. Duminil, J.; Di Michele, M. Plant species delimitation: A comparison of morphological and molecular markers. *Plant Biosyst.* **2009**, *143*, 528–542, <https://doi.org/10.1080/11263500902722964>.

58. Arrigoni, P.V.; Diana, S. Karyology, chorology and bioecology of the genus *Limonium* (Plumbaginaceae) in Sardinia. *Plant Biosyst.* **1999**, *133*, 63–71, <https://doi.org/10.1080/11263509909381533>.
59. Bacchetta, G.; Brullo, S.; Terrasi, M.C. A new species of *Hypochoeris* L. (Asteraceae, Cichorieae) from Sardinia. *Willdenowia* **2003**, *33*, 71–78, <https://doi.org/10.3372/wi.33.33107>.
60. Lussu, M.; Marignani, M.; Lai, R.; Loi, M.C.; Cogoni, A.; Cortis, P. A Synopsis of Sardinian Studies: Why Is it Important to Work on Island Orchids? *Plants* **2020**, *9*, 853, <https://doi.org/10.3390/plants9070853>.
61. Bedini, G.; Garbari, F.; Peruzzi, L. Karyological knowledge of Italian vascular flora as inferred by the analysis of Chrobase.it. *Plant Biosyst.* **2012**, *145*, 889–899, <https://doi.org/10.1080/11263504.2011.611182>.
62. Romeiras, M.M.; Carine, M.; Duarte, M.C.; Catarino, S.; Dias, F.S.; Borda-de-Água, L. Bayesian methods to analyze historical collections in time and space: A case study using Cabo Verde Endemic Flora. *Front. Plant Sci.* **2020**, *11*, 278, <https://doi.org/10.3389/fpls.2020.00278>.
63. Médail, F. The specific vulnerability of plant biodiversity and vegetation on Mediterranean islands in the face of global change. *Reg. Environ. Change* **2017**, *17*, 1775–1790, <https://doi.org/10.1007/s10113-017-1123-7>.
64. Zhu, H. Biogeographical evidences help revealing the origin of Hainan Island. *PLoS ONE* **2016**, *11*, e0151941, <https://doi.org/10.1371/journal.pone.0151941>.
65. Meyer, J.-Y. Threat of invasive alien plants to native flora and forest vegetation of Eastern Polynesia. *Pac. Sci.* **2004**, *58*, 357–375, <https://doi.org/10.1353/psc.2004.0032>.
66. Médail, F.; Quezel, P. Hot-Spots analysis for conservation of plant biodiversity in the Mediterranean Basin. *Ann. Mo. Bot. Gard.* **1997**, *84*, 112–127, <https://doi.org/10.2307/2399957>.
67. Médail, F.; Quezel, P. Biodiversity Hot-spots in the Mediterranean Basin: Setting global conservation priorities. *Conserv. Biol.* **1999**, *13*, 1510–1513, <https://doi.org/10.1046/j.1523-1739.1999.98467.x>.
68. Brullo, C.; Brullo, S.; Giusso del Galdo, G. Considerations on the endemic flora of Sicily. In Proceedings of the Second Botanical Conference in Menorca “Islands and Plants: Preservation and understanding of flora on Mediterranean islands”, Menorca, Spain, 26–30 April 2011; Cardona Pons, E., Estaun Clarisó, I., Comas Casademont, M., Fraga i Arguimbau, P., Eds.; Menorquí d’Estudis, Consell Insular de Menorca: Maó, Spain, 2013; pp. 177–199.
69. Sáez, L.; Fraga, P.; López-Alvarado, J. The Flora of the Balearic Islands, Proceedings of the Second Botanical Conference in Menorca “Islands and Plants: Preservation and Understanding of Flora on Mediterranean Islands”, Menorca, Spain, 26–30 April 2011; Cardona Pons, E., Estaun Clarisó, I., Comas Casademont, M., Fraga i Arguimbau, P., Eds.; Menorquí d’Estudis, Consell Insular de Menorca: Maó, Spain, 2013; pp. 91–103.
70. Jeanmonod, D.; Naciri, Y.; Schlüssel, A.; Gamisans, J. Floristic analyses of the Corsican flora: Biogeographical origin and endemism. *Candollea* **2015**, *70*, 21–41, <https://doi.org/10.15553/c2015v701a3>.
71. Cho, M.-S.; Yang, J.Y.; Yang, T.-J.; Kim, S.-C. Evolutionary comparison of the chloroplast genome in the woody *Sonchus* alliance (Asteraceae) on the Canary Islands. *Genes* **2019**, *10*, 217, <https://doi.org/10.3390/genes10030217>.
72. Dolcher, T.; Pignatti, S. Un’ipotesi sull’evoluzione dei *Limonium* del bacino del Mediterraneo. *Plant Biosyst.* **1971**, *105*, 95–107, <https://doi.org/10.1080/11263507109429314>.
73. Koutroumpa, K.; Warren, B.H.; Theodoridis, S.; Coiro, M.; Romeiras, M.M.; Jiménez, A.; Conti, E. Geo-climatic changes and apomixis as major drivers of diversification in the Mediterranean sea lavenders (*Limonium* Mill.). *Front. Plant Sci.* **2021**, *11*, 2127, <https://doi.org/10.3389/fpls.2020.612258>.
74. Bacchetta, G.; Brullo, S.; Velari, T.C.; Chiapella, L.F.; Kosovel, V. Analysis of the *Genista ephedroides* group (Fabaceae) based on karyological, molecular and morphological data. *Caryologia* **2012**, *65*, 47–61, <https://doi.org/10.1080/00087114.2012.678088>.
75. Bacchetta, G.; Brullo, S.; Chiapella, L.F.; Velari, T.C.; Fenu, G.; Del Galdo, G.G. Taxonomic remarks on *Genista salzmännii* group (Fabaceae) in Sardinia and Corsica. *Phytotaxa* **2020**, *449*, 31–51, <https://doi.org/10.11646/phytotaxa.449.1.4>.
76. Bacchetta, G.; Brullo, S.; Casti, M.; Giusso del Galdo, G.P. Taxonomic revision of the *Dianthus sylvestris* group (Caryophyllaceae) in central-southern Italy, Sicily and Sardinia. *Nord. J. Bot.* **2010**, *28*, 137–173, <https://doi.org/10.1111/j.1756-1051.2009.00459.x>.
77. Terlević, A.; Rešetnik, I. Inventory of the historical *Dianthus sylvestris* herbarium materials from Herbarium Croaticum and Herbarium Ivo and Marija Horvat. *Glas. Hrvat. Bot. Druš.* **2020**, *8*, 8–14, <https://doi.org/10.46232/glashbod.8.1.2>.
78. Nebot, A.; Cogoni, D.; Fenu, G.; Bacchetta, G. Breeding system and inbreeding depression in a translocated population of the endangered plant *Dianthus morisianus* (Caryophyllaceae). *Flora* **2020**, *262*, 151488, <https://doi.org/10.1016/j.flora.2019.151488>.
79. Valente, L.M.; Savolainen, V.; Vargas, P. Unparalleled rates of species diversification in Europe. *Proc. R. Soc. B* **2010**, *277*, 1489–1496, <https://doi.org/10.1098/rspb.2009.2163>.
80. Naciri, Y.; Du Pasquier, P.E.; Lundberg, M.; Jeanmonod, D.; Oxelman, B. A phylogenetic circumscription of *Silene* sect. *Siphonomorpha* (Caryophyllaceae) in the Mediterranean Basin. *Taxon* **2017**, *66*, 91–108, <https://doi.org/10.12705/661.5>.
81. Murru, V.; Grillo, O.; Santo, A.; Uccesu, M.; Piazza, C.; Gaio, A.; Carta, A.; Bacchetta, G. Seed morpho-colorimetric analysis on some Tyrrhenian species of the *Silene mollissima* aggregate (Caryophyllaceae). *Flora* **2019**, *258*, 151445, <https://doi.org/10.1016/j.flora.2019.151445>.
82. Selvi, F.; Coppi, A.; Bigazzi, M. Karyotype variation, evolution and phylogeny in *Borago* (Boraginaceae), with emphasis on subgenus *Buglossites* in the Corso-Sardinian system. *Ann. Bot.* **2006**, *98*, 857–868, <https://doi.org/10.1093/aob/mcl167>.
83. Farris, E.; Orrù, M.; Uccesu, M.; Amadori, A.; Porceddu, M.; Bacchetta, G. Morpho-Colorimetric characterization of the Sardinian endemic taxa of the genus *Anchusa* L. by seed image analysis. *Plants* **2020**, *9*, 1321, <https://doi.org/10.3390/plants9101321>.

84. Callmander, M.W.; Phillipson, P.B.; Schatz, G.E.; Andriambololona, S.; Rabarimanarivo, M.; Rakotonirina, N.; Raharimampionona, J.; Chatelain, C.; Gautier, L.; Lowry, P.P. The endemic and non-endemic vascular flora of Madagascar updated. *Plant Ecol. Evol.* **2011**, *144*, 121–125, <https://doi.org/10.5091/plecevo.2011.513>.
85. Gentili, R.; Fenu, G.; Labra, M.; Bruni, I.; Mattana, E.; Bacchetta, G. *Lamyropsis* genus in the Mediterranean area: Phylogenetic position of *L. microcephala* (Asteraceae: Cardueae). *Plant Biosyst.* **2015**, *149*, 944–948, <https://doi.org/10.1080/11263504.2014.983204>.
86. Gentili, R.; Fenu, G.; Porceddu, M.; Bruni, I.; Citterio, S.; Bacchetta, G. Genetic variability of the first-generation of *Ribes sardoum*, a threatened relic plant requiring translocation measures. *Plant Biosyst.* **2019**, *153*, 1–4, <https://doi.org/10.1080/11263504.2018.1435574>.
87. Bocchieri, E.; Iiriti, G. Biodiversità vegetale in sistemi microinsulari della Sicilia e della Sardegna. *Biogeographia* **2011**, *30*, 177–196, <https://doi.org/10.21426/B630110594>.
88. Pisanu, S.; Mameli, G.; Farris, E.; Binelli, G.; Filigheddu, R. A natural homoploid hybrid between *Centaurea horrida* and *Centaurea filiformis* (Asteraceae) as revealed by morphological and genetic traits. *Folia Geobot.* **2011**, *46*, 69–86, <https://doi.org/10.1007/s12224-010-9085-2>.
89. Pignatti, S. Plant geographical and morphological evidences in the evolution of the mediterranean flora (with particular reference to the Italian representatives). *Webbia* **1979**, *34*, 243–255, <https://doi.org/10.1080/00837792.1979.10670170>.
90. Sciandrello, S.; Guarino, R.; Minissale, P.; Spampinato, G. The endemic vascular flora of Peloritani Mountains (NE Sicily): Plant functional traits and phytogeographical relationships in the most isolated and fragmentary micro-plate of the Alpine orogeny. *Plant Biosyst.* **2015**, *149*, 838–854, <https://doi.org/10.1080/11263504.2014.908978>.
91. De Castro, O.; Brullo, S.; Colombo, P.; Jury, S.; De Luca, P.; Di Maio, A. Phylogenetic and biogeographical inferences for *Pan-cratiium* (Amaryllidaceae), with an emphasis on the Mediterranean species based on plastid sequence data. *Bot. J. Linn. Soc.* **2012**, *170*, 12–28, <https://doi.org/10.1111/j.1095-8339.2012.01268.x>.
92. Meloni, M.; Dettori, C.A.; Reid, A.; Bacchetta, G.; Hugot, L.; Conti, E. High genetic diversity and presence of genetic structure characterise the endemics *Ruta corsica* and *Ruta lamarmorae* (Rutaceae). *Caryologia* **2020**, *73*, 11–26, <https://doi.org/10.13128/caryologia-510>.
93. Conti, F.; Bartolucci, F.; Bacchetta, G.; Pennesi, R.; Lakušić, D.; Niketić, M. A taxonomic revision of the *Siler montanum* group (Apiaceae) in Italy and the Balkan Peninsula. *Willdenowia* **2021**, *51*, 321–347, <https://doi.org/10.3372/wi.51.51301>.
94. Bocchieri, E.; Satta, V. Flora and vegetal landscape on the island of Figarolo (NE Sardinia). *Lagascalia* **1999**, *21*, 17–46.
95. Maccioni, A.; Canopoli, L.; Cubeddu, V.; Cucca, E.; Dessena, S.; Morittu, S.; Filigheddu, R.; Padedda, B.M.; Farris, E. Gradients of salinity and plant community richness and diversity in two different Mediterranean coastal ecosystems in NW Sardinia. *Biodivers. Data J.* **2021**, *9*, e71247, <https://doi.org/10.3897/BDJ.9.e71247>.
96. Podda, L.; Meloni, F.; Fenu, G.; Iiriti, G.; Bacchetta, G. The vascular flora of the Marine Protected Area of “Capo Carbonara” (SE-Sardinia). *Fl. Medit.* **2021**, *31*, 415–449, <https://doi.org/10.7320/FIMedit31SI.415>.
97. Fois, M.; Fenu, G.; Bacchetta, G. Identifying and assessing the efficiency of different networks of a fine-scale hierarchy of biodiversity hotspots. *Plant Ecol. Divers.* **2018**, *11*, 121–132, <https://doi.org/10.1080/17550874.2018.1474281>.
98. Fenu, G.; Mattana, E.; Congiu, A.; Bacchetta, G. The endemic vascular flora of Supramontes (Sardinia), a priority plant conservation area. *Candollea* **2010**, *65*, 347–358, <https://doi.org/10.15553/c2010v652a10>.
99. Camarda, I.; Brundu, G.; Carta, L.; Vacca, G.; Brunu, A. Plants and grazing: An evaluation of the effects on Sardinian endemic plants conservation. *Flora Medit.* **2015**, *25*, 263–275, <https://doi.org/10.7320/FIMedit25SI.263>.
100. Fenu, G.; Cogoni, D.; Navarro, F.; Concas, E.; Bacchetta, G. The importance of the *Cisto-Lavanduletalia* coastal habitat on population persistence of the narrow endemic *Dianthus morisianus* (Caryophyllaceae). *Plant Species Biol.* **2017**, *32*, 156–168, <https://doi.org/10.1111/1442-1984.12138>.
101. Bagella, S.; Filigheddu, R.; Benesperi, R.; Giordani, P.; Minuto, L.; Viciani, D.; Caria, M.C.; Pisanu, S.; Casazza, G. Thorn, spine and prickle patterns in the Italian flora. *Plant Biosyst.* **2019**, *153*, 118–133, <https://doi.org/10.1080/11263504.2018.1474961>.
102. Adamson, K.R.; Hughes, P.D.; Woodward, J.C. Pleistocene glaciation of the Mediterranean mountains. *Quat. Newsl.* **2013**, *131*, 2–15.
103. Mazza, P.P.; Lovari, S.; Masini, F.; Masseti, M.; Rustioni, M. A multidisciplinary approach to the analysis of multifactorial land mammal colonization of islands. *BioScience* **2013**, *63*, 939–951, <https://doi.org/10.1525/bio.2013.63.12.7>.
104. Carta, A.; Bedini, G.; Guidi, T.; Foggi, B. Tuscan Archipelago flora: From genesis to conservation. In Proceedings of the Second Botanical Conference in Menorca “Islands and Plants: Preservation and understanding of flora on Mediterranean islands”, Menorca, Spain, 26–30 April 2011; Cardona Pons, E., Estaun Clarisó, I., Comas Casademont, M., Fraga i Arguimbau, P., Eds.; Menorquí d’Estudis, Consell Insular de Menorca: Maó, Spain, 2013; pp. 157–166.
105. Bacchetta, G.; Fenu, G.; Guarino, R.; Mandis, G.; Mattana, E.; Nieddu, G.; Scudu, C. Floristic traits and biogeographic characterization of the Gennargentu massif (Sardinia). *Candollea* **2013**, *68*, 209–220, <https://doi.org/10.15553/c2012v682a4>.
106. Bacchetta, G.; Iiriti, G.; Mossa, L. La flora endemica del Sarrabus-Gerrei: Un patrimonio da tutelare e gestire. In *Analisi e Sistemi di Gestione del Territorio (Sarrabus-Gerrei)*; Artizzu, D., Ed.; 2005; Comune di Sinnai: Sinnai, pp. 105–112.
107. Calvia, G.; Ruggero, A. The vascular flora of Mount Limbara (northern Sardinia): From a troubled past towards an uncertain future. *Fl. Medit.* **2020**, *30*, 293–313 <https://doi.org/10.7320/FIMedit30.293>.
108. Arrigoni, P.V. Rapporti floristici tra l’Arcipelago Toscano e le terre vicine. *Lav. Soc. Ital. Biogeogr.* **1975**, *5*, 55–65, <https://doi.org/10.21426/B65110064>.

109. Arrigoni, P.V. Aspetti corologici della flora sarda. *Biogeographia* **1983**, *8*, 65, <https://doi.org/10.21426/B68110118>.
110. Dapporto, L.; Palagi, E.; Turillazzi, S. Cuticular Hydrocarbons of *Polistes dominulus* as a Biogeographic Tool: A Study of Populations from the Tuscan Archipelago and Surrounding Areas. *J. Chem. Ecol.* **2004**, *30*, 2139–2151, <https://doi.org/10.1023/B:JOEC.0000048779.47821.38>.
111. Schmitt, T.; Fritz, U.; Delfino, M.; Ulrich, W.; Habel, J.C. Biogeography of Italy revisited: Genetic lineages confirm major phylogeographic patterns and a pre-Pleistocene origin of its biota. *Front. Zool.* **2021**, *18*, 34, <https://doi.org/10.1186/s12983-021-00418-9>.
112. Contandriopoulos, J. Recherches sur la flore endémique de la Corse et sur ses origines. *Ann. Fac. Sci. Marseille* **1962**, *32*, 1–354.
113. Médail, F.; Verlaque, R. Ecological characteristics and rarity of endemic plants from southeast France and Corsica: Implications for biodiversity conservation. *Biol. Conserv.* **1997**, *80*, 269–281, [https://doi.org/10.1016/S0006-3207\(96\)00055-9](https://doi.org/10.1016/S0006-3207(96)00055-9).
114. Hamel, T.; Boulemtafes, A. Découverte d'une endémique tyrrhénienne *Soleirolia soleirolii* (Urticaceae) en Algérie (Afrique du Nord). *Fl. Medit.* **2017**, *27*, 185–193, <https://doi.org/10.7320/FlMedit27.185>.
115. Bobo-Pinilla, J.; de León, S.B.B.; Colomar, J.S.; Fenu, G.; Bacchetta, G.; de Giles, J.P.; Martínez-Ortega, M.M. Phylogeography of *Arenaria balearica* L. (Caryophyllaceae): Evolutionary history of a disjunct endemic from the Western Mediterranean continental islands. *PeerJ* **2016**, *4*, e2618, <https://doi.org/10.7717/peerj.2618>.
116. Bocquet, G. The Messinian model: A new outlook for the floristics and systematics of the Mediterranean area. *Candollea* **1978**, *33*, 269–287.
117. Rosselló, J.A.; Cosín, R.; Bacchetta, G.; Brullo, S.; Mayol, M. Nuclear and chloroplast DNA variation in *Cephalaria squamiflora* (Dipsacaceae), a disjunct Mediterranean species. *Taxon* **2009**, *58*, 1242–1253, <https://doi.org/10.1002/tax.584015>.
118. Fenu, G.; Mattana, E.; Bacchetta, G. Distribution, status and conservation of a Critically Endangered, extremely narrow endemic: *Lamyropsis microcephala* (Asteraceae) in Sardinia. *Oryx* **2011**, *45*, 180–186, <https://doi.org/10.1017/S0030605310001122>.
119. Garrido, J.L.; Fenu, G.; Mattana, E.; Bacchetta, G. Spatial genetic structure of *Aquilegia* taxa endemic to the island of Sardinia. *Ann. Bot.* **2012**, *109*, 953–964, <https://doi.org/10.1093/aob/mcs011>.
120. Cogoni, D.; Sulis, E.; Bacchetta, G.; Fenu, G. The unpredictable fate of the single population of a threatened narrow endemic Mediterranean plant. *Biodivers. Conserv.* **2019**, *28*, 1799–1813, <https://doi.org/10.1007/s10531-019-01757-0>.
121. Murru, V.; Farris, E.; Santo, A.; Grillo, O.; Piazza, C.; Gaio, A.; Bacchetta, G.; Thompson, J.D. Niche Differentiation at Multiple Spatial Scales on Large and Small Mediterranean Islands for the Endemic *Silene velutina* Pourr. ex Loisel. (Caryophyllaceae). *Plants* **2021**, *10*, 2298, <https://doi.org/10.3390/plants10112298>.
122. Porceddu, M.; Fenu, G.; Bacchetta, G. New findings on seed ecology of *Ribes sardoum*: Can it provide a new opportunity to prevent the extinction of a threatened plant species? *Syst. Biodivers.* **2017**, *15*, 480–488, <https://doi.org/10.1080/14772000.2016.1271058>.
123. Porceddu, M.; Santo, A.; Orru, M.; Meloni, F.; Uccesu, M.; Picciau, R.; Sarigu, M.; Cuenca-Lombraña, A.; Podda, L.; Sau, S.; et al. Seed conservation actions for the preservation of plant diversity: The case of the Sardinian Germplasm Bank (BG-SAR). *Plant Sociol.* **2017**, *54*, 111–117, <http://dx.doi.org/10.7338/pls2017542S1/11>.
124. Fenu, G.; Bacchetta, G.; Christodoulou, C.S.; Cogoni, D.; Fournaraki, C.; Giusso del Galdo, G.; Gotsiou, P.; Kyrtzizis, A.; Piazza, C.; Vicens, M.; et al. A common approach to the conservation of threatened island vascular plants: First results in the Mediterranean basin. *Diversity* **2020**, *12*, 157, <https://doi.org/10.3390/d12040157>.
125. Médail, F.; Baumel, A. Using phylogeography to define conservation priorities: The case of narrow endemic plants in the Med-578 iterranean Basin hotspot. *Biol. Conserv.* **2018**, *224*, 258–266, <https://doi.org/10.1016/j.biocon.2018.05.028>.
126. Bobo-Pinilla, J.; Salmerón-Sánchez, E.; Mendoza-Fernández, A.J.; Mota, J.F.; Peñas, J. Conservation and phylogeography of plants: From the Mediterranean to the rest of the world. *Diversity* **2022**, *14*, 78, <https://doi.org/10.3390/d14020078>.
127. Gauthier, P.; Debussche, M.; Thompson, J.D. Regional priority setting for rare species based on a method combining three criteria. *Biol. Conserv.* **2010**, *143*, 1501–1509, <https://doi.org/10.1016/j.biocon.2010.03.032>.
128. Carmignani, L.; Oggiano, G.; Funedda, A.; Conti, P.; Pasci, S. The geological map of Sardinia (Italy) at 1: 250,000 scale. *J. Maps* **2016**, *12*, 826–835, <https://doi.org/10.1080/17445647.2015.1084544>.
129. Bacchetta, G. Flora vascolare del Sulcis (Sardegna sud-occidentale, Italia). *Guineana* **2006**, *12*, 1–369.
130. Bacchetta, G.; Bagella, S.; Biondi, E.; Farris, E.; Filigheddu, R.; Mossa, L. Vegetazione forestale e serie di vegetazione della Sardegna (con rappresentazione cartografica alla scala 1:350.000). *Fitosociologia* **2009**, *46*, 3–82.
131. Canu, S.; Rosati, L.; Fiori, M.; Motroni, A.; Filigheddu, R.; Farris, E. Bioclimate map of Sardinia (Italy). *J. Maps* **2015**, *11*, 711–718, <https://doi.org/10.1080/17445647.2014.988187>.
132. Danin, A.; Buldrini, F.; Bandini Mazzanti, M.; Bosi, G.; Caria, M.C.; Dandria, D.; Lanfranco, E.; Mifsud, S.; Bagella, S. Diversification of *Portulaca oleracea* L. complex in the Italian peninsula and adjacent islands. *Bot. Lett.* **2016**, *163*, 261–272, <https://doi.org/10.1080/23818107.2016.1200482>.
133. Rosenbaum, G.; Lister, G.S.; Duboz, C. Reconstruction of the tectonic evolution of the western Mediterranean since the Oligocene. *J. Virtual Explor.* **2002**, *8*, 107–130, <https://doi.org/10.3809/jvirtex.2002.00053>.
134. Favre, E.; François, L.; Fluteau, F.; Cheddadi, R.; Thévenod, L.; Suc, J.P. Messinian vegetation maps of the Mediterranean region using models and interpolated pollen data. *Geobios* **2007**, *40*, 433–443, <https://doi.org/10.1016/j.geobios.2006.12.002>.
135. Hsü, K.J.; Montadert, L.; Bernoulli, D.; Cita, M.B.; Erickson, A.; Garrison, R.E.; Kidd, R.B.; Melieres, F.; Muller, C.; Wright, R. History of Mediterranean salinity crisis. *Nature* **1977**, *267*, 399–403, <https://doi.org/10.1038/267399a0>.
136. Cherchi, A.; Montadert, L. Oligo-Miocene rift of Sardinia and the history of the Western Mediterranean Basin. *Nature* **1982**, *298*, 736–739, <https://doi.org/10.1038/298736a0>.

137. Fiz-Palacios, O.; Vargas, P.; Vila, R.; Papadopulos, A.S.; Aldasoro, J.J. The uneven phylogeny and biogeography of *Erodium* (Geraniaceae): Radiations in the Mediterranean and recent recurrent intercontinental colonization. *Ann. Bot.* **2010**, *106*, 871–884, <https://doi.org/10.1093/aob/mcq184>.
138. De Castro, O.; Innangi, M.; Di Maio, A.; Menale, B.; Bacchetta, G.; Pires, M.; Noble, V.; Gestri, G.; Conti, F.; Peruzzi, L. Disentangling phylogenetic relationships in a hotspot of diversity: The butterworts (*Pinguicula* L., Lentibulariaceae) endemic to Italy. *PLoS ONE* **2016**, *11*, e0167610, <https://doi.org/10.1371/journal.pone.0167610>.
139. Míguez, M.; Gehrke, B.; Maguilla, E.; Jiménez-Mejías, P.; Martín-Bravo, S. (2017). *Carex* sect. *Rhynchocystis* (Cyperaceae): A Miocene subtropical relict in the Western Palaeartic showing a dispersal-derived Rand Flora pattern. *J. Biogeogr.* **2017**, *44*, 2211–2224, <https://doi.org/10.1111/jbi.13027>.
140. Mossa, L.; Bacchetta, G.; Brullo, S. *Quercus ichnusae* (Fagaceae), a new species from Sardinia. *Isr. J. Plant Sci.* **1999**, *47*, 199–207, <https://doi.org/10.1080/07929978.1999.10676774>.
141. Fineschi, S.; Turchini, D.; Grossoni, P.; Petit, R.J.; Vendramin, G.G. Chloroplast DNA variation of white oaks in Italy. *For. Ecol. Manag.* **2002**, *156*, 103–114, [https://doi.org/10.1016/S0378-1127\(01\)00637-5](https://doi.org/10.1016/S0378-1127(01)00637-5).
142. Petit, R.J.; Brewer, S.; Bordács, S.; Burg, K.; Cheddadi, R.; Coart, E.; Coart, E.; Cottrell, J.; Csaikl, U.M.; van Damh, B.; et al. Identification of refugia and post-glacial colonisation routes of European white oaks based on chloroplast DNA and fossil pollen evidence. *For. Ecol. Manag.* **2002**, *156*, 49–74, [https://doi.org/10.1016/S0378-1127\(01\)00634-X](https://doi.org/10.1016/S0378-1127(01)00634-X).
143. Castroviejo, S. *Flora Iberica*; Real Jardín Botánico-CSIC: Madrid, Spain, 1986–2019; Volume 1–18, 21, [detailed list of volume editors and genera authors at www.foraiberica.org].
144. Giardina, G.; Raimondo, F.M.; Spadaro, V. A catalogue of plants growing in Sicily. *Bocconea* **2007**, *20*, 5–582.
145. Vela, E.; Pavon, D. The vascular flora of Algerian and Tunisian small islands: If not biodiversity hotspots, at least biodiversity hotspots. *Biodivers. J.* **2012**, *3*, 343–362.
146. Jeanmonod, D.; Gamisans, J. *Flora Corsica*; Édisud: Aix-en-Provence, France, 2007.
147. Pignatti, S.; Guarino, R.; La Rosa, M. *Flora d'Italia*, 2nd ed.; Edagricole: Bologna, Italy, 2017–2019; Volumes 1–4.
148. Bartolucci, F.; Domina, G.; Argenti, C.; Bacchetta, G.; Ballelli, S.; Banfi, E.; Barberis, D.; Barberis, G.; Bertolli, A.; Bolpagni, R.; et al. Notulae to the Italian native vascular flora. *Ital. Bot.* **2021**, *12*, 85–103, <https://doi.org/10.3897/italianbotanist.12.78038>.
149. Euro+Med, 2006–2020. Euro+Med PlantBase—The Information Resource for Euro-Mediterranean Plant Diversity. Available online: <http://ww2.bgbm.org/EuroPlusMed/> (accessed on 16 June 2020).
150. Plants of the World Online POWO. Facilitated by the Royal Botanic Gardens, Kew. Available online: <http://www.plantsoftheworldonline.org/2020> (accessed on 11 February 2021).
151. Martellos, S.; Bartolucci, F.; Conti, F.; Galasso, G.; Moro, A.; Pennesi, R.; Peruzzi, L.; Pittao, E.; Nimis, P.L. FlorItaly—The portal to the Flora of Italy. *PhytoKeys* **2020**, *156*, 55–71, <https://doi.org/10.3897/phytokeys.156.54023>.
152. ANTHOS: Sistema de Información sobre las Plantas de España. Available online: www.programanthos.org (accessed on 21 March 2021).
153. Inventaire National du Patrimoine Naturel—INPN. Available online: <https://inpn.mnhn.fr/> (accessed on 10 April 2021).
154. Bartolucci, F.; Peruzzi, L.; Galasso, G.; Albano, A.; Alessandrini, A.; Ardenghi, N.M.G.; Astuti, G.; Bacchetta, G.; Ballelli, S.; Banfi, E.; et al. An updated checklist of the vascular flora native to Italy. *Plant Biosyst.* **2018**, *152*, 179–303, <https://doi.org/10.1080/11263504.2017.1419996>.
155. Bacchetta, G.; Casti, M.; Mossa, L. New ecological and distributive data on the rupestrian flora of Sardinia. *J. Bot. Soc. Bot. Fr.* **2007**, *38*, 73–83.
156. Bocchieri, E.; Iiriti, G. Contribution to knowledge of the endemic vascular flora of the capes and promontories of Sardinia (Italy). *Bocconea* **2009**, *23*, 353.
157. IUCN. 2021. The IUCN Red List of Threatened Species. Version 2021-3. Available online: <https://www.iucnredlist.org> (accessed on 20 November 2021).
158. Rossi, G.; Montagnani, C.; Abeli, T.; Gargano, D.; Peruzzi, L.; Fenu, G.; Wagensommer, R.P.; Ravera, S.; Cogoni, A.; Aleffi, M.; et al. Are Red Lists really useful for plant conservation? The New Red List of the Italian Flora in the perspective of national conservation policies. *Plant Biosyst.* **2014**, *148*, 187–190, <https://doi.org/10.1080/11263504.2013.868375>.
159. Fenu, G.; Bacchetta, G.; Giacanelli, V.; Gargano, D.; Montagnani, C.; Orsenigo, S.; Cogoni, D.; Rossi, G.; Conti, F.; Santangelo, A.; et al. Conserving plant diversity in Europe: Outcomes, criticisms and perspectives of the Habitats Directive application in Italy. *Biodivers. Conserv.* **2017**, *26*, 309–328, <https://doi.org/10.1007/s10531-016-1244-1>.
160. Fois, M.; Bacchetta, G.; Cogoni, D.; Fenu, G. Current and future effectiveness of the Natura 2000 network for protecting plant species in Sardinia: A nice and complex strategy in its raw state? *J. Environ. Plan. Manag.* **2018**, *61*, 332–347, <https://doi.org/10.1080/09640568.2017.1306496>.
161. Fois, M.; Bacchetta, G.; Caria, M.C.; Cogoni, D.; Farris, E.; Fenu, G.; Manca, M.; Pinna, M.S.; Pisanu, S.; Riviaccio, G.; et al. Proposals for improvement of Annex I of Directive 92/43/EEC: Sardinia. *Plant Sociol.* **2021**, *58*, 65–76, <https://doi.org/10.3897/pls2021582/06>.
162. Cuenca-Lombraña, A.; Fois, M.; Cogoni, A.; Bacchetta, G. Where we Come from and where to Go: Six Decades of Botanical Studies in the Mediterranean Wetlands, with Sardinia (Italy) as a Case Study. *Wetlands* **2021**, *41*, 69, <https://doi.org/10.1007/s13157-021-01464-z>.